

KESFORD

# Portfolio

Waterproofing

Coating

Flooring

Expansion  
Joint

Concrete  
Repair

Re-roofing



## The Company

**Kesford (Hong Kong) Ltd.** was founded in 2001. Over the years, **Kesford** has been supplying and applying reputable brands of high-quality construction materials. Through working directly with property developers, consultants and contractors, we have successfully serviced many construction and “design and build” projects in Hong Kong and Macau throughout the years.

**Kesford** has its own trained, experienced and well equipped contracting team. Our team offers advice on all aspects of product selection and application methods based on various designs, and provides unparalleled solutions to exceed the expectations of our valued customers.

Our clients include both public and private sectors. For the public sector, our clients include Mass Transit Railway Corporation, Hong Kong Housing Authority, Architectural Services Department, Hong Kong Hospital Authority, Airport Authority Hong Kong, Drainage Services Department, Water Supplies Department, Hong Kong Electric, Chinese University Hong Kong, etc. For the private sector, we have clients including Galaxy Entertainment, Hutchison Whampoa Group, Cheung Kong Holdings Ltd., Swire Properties, Tins’, New World Development, etc.





## Our Motto

*All our contract works are executed with the highest standard in the shortest period of time.*

*“Offering harmony proposal by fully understand the designers’ idea and building usage ”.*

## Our Commitment

Safety, Service, Satisfaction, Quality and Environmental Protection have long been the five standards we committed for our products and services.

SAFETY

SERVICE

SATISFACTION

QUALITY

ENVIRONMENT







## Our Services

**Kesford (Hong Kong) Ltd.** offers consultation, application, testing technology, guarantee, maintenance and renovation services, specializing in *Waterproof, Functional Coating, Garden Roof, Expansion Joints, Flooring, Concrete Repair & Re-roofing System.*

Waterproofing

Coating

Flooring

Expansion  
Joint

Concrete  
Repair

Re-roofing



## A SOLID CHOICE

### *Act for High Quality Waterproofing Materials*

**Kesford (Hong Kong) Ltd.** Is a specialist waterproofing supplier and applicator for construction of basements, tunnels, large commercial and industrial roof, garden roof, swimming pool, water & sewage treatment structure etc. We offer high quality service and innovative products to our clients including different kinds of waterproofing system as below:-

- Hydrotech MM6125 – Hot Applied Monolithic Modified Rubberized Asphalt Membrane
- Hydrolink Polyurea – Innovative Spray Applied Pure Polyurea Membrane
- Hydrolink Penetron – Crystalline Waterproofing Concrete Admixture
- Hydrolink Penetron - Capillary Cementitious Waterproofing Slurry &
- Hydrolink EW – High Performance Flexible Cementitious Slurry
- Hydrolink Elastic Guard PU – Cold Applied Liquid Polyurethane Membrane
- Hydrolink Bitumat – Modified Bituminous Self Adhesive & Torch Applied Sheet Membrane
- Hydrolink BT – Economic Bituminous Paint Coating
- Hydrolink Syn-roof Hi Build – UV Resistance Arcylic Coating
- Hydrolink Bentonite – High Effective Bentonite Geotextile Waterproofing
- Hydrolink HLT – Hydro- Lock Treatment Coating







*Protecting buildings and creating beautiful exteriors with exceptional functional coatings for architectural use .....*

**Kesford (Hong Kong) Ltd.** continue to search for and provide a range of creative, innovative, special, high performance and environmental friendly coating systems in Architectural, Decorative, Anti-Graffiti & Industrial Coating including:-

- “Hydron” Anti-Graffiti Coating
- “Hydron” Graffiti Remover
- “Hydron” Stone Cleaner
- “Hydron” Protective Coating
- “Hydron” Anti-Carbonation Coating



**HYDRON**  
Graffiti Removers



**Nu-Guard® AG**  
exterior anti-graffiti coating system



**Nu-Cryl® AG**  
Clear Protection



## Functional, Durable & Decorative Flooring System

**Kesford (Hong Kong) Ltd.** is specialized in flooring works such as dry shake hardener, self-leveling epoxy flooring, self-smoothing floor screed, polyurea, polyurethane and epoxy floor coating, road surface anti-skid system and liquid hardener. **Kesford** is experienced in the epoxy flooring business and is supported by a lot of practical job experience. **Kesford** offers a wide choices of systems, thickness, colours and textures to suit all your flooring needs. All materials are supplied by renowned manufacturers both locally and in Germany, United State and European Community.

- ***“Hydrolink Penetron Plus” Monolithic Waterproofing & Floor Hardener***
- ***“Hydrolink” Durable Polyurea Floor Coating***
- ***“Hydrolink” Flexible & Waterproof Polyurethane Floor Coating***
- ***“Hydrolink” Heavy Duty Epoxy Floor Coating***
- ***“Hydrolink” High Skid Resistance Floor System***
- ***“Hydrolink” Over layment / Underlayment Self Leveling***
- ***“Hydrolink – Peneseal FH” Liquid Hardener / Densifiers***

***Perfect flooring solutions for all industries.....***







## *Architectural Expansion Joint*

### **•Architectural Expansion Joint Cover**

*A new way of design...*

*A fully integrated and complete joint system...*

*An elegant appearance that nowhere else can offer!*

### **•Heavy Duty Expansion Joint Membrane**

*Monolithic and elastic seamed joints ,*

*Durable Membrane*

*High Tensile Strength & Abrasion Resistance.....*

### **•Proprietary Expansion Joint Fire Barrier**

*Blanket type fire-barrier to prevent transmission  
of smoke and flame.....*





RE-ROOFING



ECO-FRIENDLY RE-ROOFING SYSTEM

**Kesford (Hong Kong) Ltd.** provides an one-stop service for all types of re-roofing works as well as conventional or Eco-Friendly re-roofing system. Over the time, **Kesford** has completed over 100,000s.m. of re-roofing work for the government and private projects.

For environmental protection, we develop an Eco-Friendly Polyurea Re-roofing System which lends itself well to all types of roofing situations, from traditional flat roofs to unusual designs. Eco-Polyurea Re-roofing Systems can be applied rapidly, with no disruption to the facilities. For most re-roofing situations, the existing roof finishes can still be preserved in order to lower the disturbance.



ECO-FRIENDLY POLYUREA RE-ROOFING SYSTEM

- ✓ No need to remove the existing roof finish
- ✓ No disruption to the facilities
- ✓ Eco-friendly
- ✓ Rapid application
- ✓ Cost saving
- ✓ Waterproof & Suitable For Garden Roof
- ✓ Easy maintenance



One-Stop Services    Inspection, Quote, Construction, Guarantee, Repairing

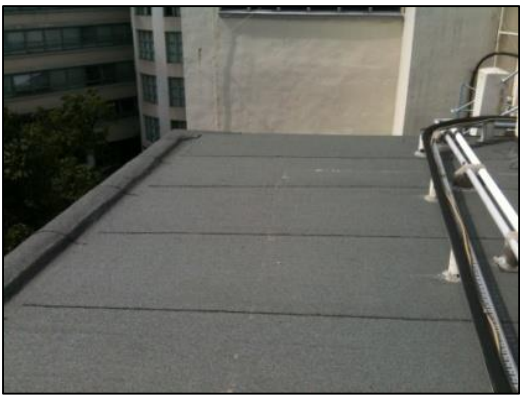


**KESFORD** has carried out the re-roofing works for ASD (PSB) Department & Education Bureau Term Contracts since 2008 and completed over 200,000s.m. re-roofing works for different term contractors of Hong Kong Island Eastern, Wanchi, Kowloon Mid & West, Kwai Chung, Tsing Yi, Tsuen Wan, Shatin, Tai Po & North District including Able Engineering Co. Ltd., China Resources Construction Co. Ltd., K-peak Co. Ltd., Square Construction Co. Ltd. & Lanon Construction Co. Ltd.

**Selected Job References**

**Maintenance Term Contract**

- ◆ Contract No. TCT 031
- ◆ Contract no TCT041
- ◆ Contract No. TCW 081
- ◆ Contract No. TCW 082
- ◆ Contract No. TCY 073
- ◆ Contract No. TCW 022
- ◆ Contract No. TCW 052
- ◆ Contract No. TCW 042





**Kesford**

# Reference

**Waterproofing**

**Coating**

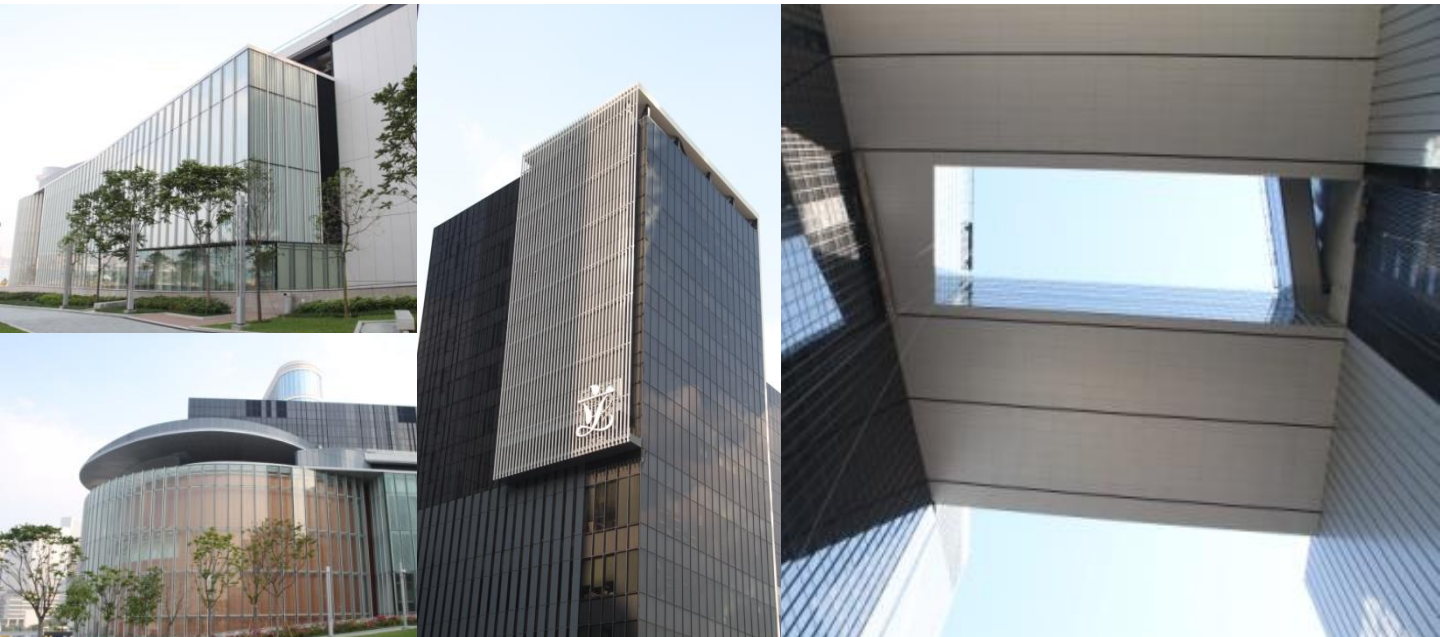
**Flooring**

**Expansion  
Joint**

**Concrete  
Repair**

**Re-roofing**





GAMMON HIP HING JV | TAMAR DEVELOPMENT



**Project**

The impressive Central Government Complex Tamar is the new location of the offices of the Government of Hong Kong Special Administrative Region. The 42,000s.m plot is among the most prestigious and most expensive ones in Hong Kong. The project uses neither Chinese nor European government building design, but instead it is a mix of postmodern architecture and low-frills international design. The building’s multistory underground car park and facility quarters reaching deep into groundwater, thus required reliable waterproofing.

**Solution**

**Kesford** had completed over 100,000s.m. waterproofing works for all podiums, flat roofs, water tanks, lift pit, external wall and internal wet areas. And our spray applied polyurea membrane was also applied onto the garden roof of a link bridge surface.







**Drainage Services Department**  
The Government of the Hong Kong Special Administrative Region



**Harbour Areas Treatment Scheme Stage 2A  
Upgrading Works at Stonecutters Island  
Sewage Treatment Works**

**Consultant :** AECOM  
**Contractor :** Sun Fook Kong – Biwater Joint Venture  
**Client :** Drainage Services Department  
**Product:** Nukote HT Polyurea  
Hydrolink Elastic Guard PU



## Water Supplies Department

The Government of the Hong Kong Special Administrative Region



### CONTRACT NO. 10/WSD/09

#### SALT WATER SUPPLY SYSTEM FOR POK FU LAM

Consultant : ARUP  
Contractor : Law Chi Yip Construction Co. Ltd.  
Client : Water Supplies Department  
Product: i) Polyurea Expansion Joint System  
ii) Hydrolink Elastic Guard PU Membrane



#### Selected Job References

- ◆ Cha Kwo Ling Salt Water Pumping Station
- ◆ Shatin Water Treatment Plant
- ◆ Ho Chung Pumping Station
- ◆ Long Keng Pumping Station
- ◆ Tai Mong Tsai Pumping Station





***HONG KONG SCIENCE PARK PHASE 3A & 3B  
GAMMON CONSTRUCTION LTD.***

The Hong Kong Science Park Phases 3a and 3b project includes the construction of three 8 to 9-storey Research and Development Office and Laboratory Buildings with basement car parks, service tunnels and a link bridge between buildings, covering a construction floor area of 105,000 s.m.



Galaxy Phase2, Macau  
Casino, Hotel & Resort Development

Macau



BASEMENT, PODIUM & ROOF

*KESFORD was awarded the waterproofing contract for Galaxy Phase 2 Macau project in 2012. Our polyurea waterproofing system has been applied onto the external tanking of basement and the total waterproofing areas are over 95,000s.m.*

*KESFORD Polyurea System was chosen as the waterproofing membrane in this high profile job after thorough pre qualification by the Client and Consultant. The project was complicated; consists of new basement structure with backfill wall & blind-side wall, interfacing between new and existing structure or advance basement structure and also waterproofing for expansion joint.*

*The specified Polyurea membrane was applied to the basement concrete floor and wall surface treated with epoxy primer or over the geotextile layer to the blind-side surface and expansion joint with filler board.*



GALAXY PHASE2, MACAU

Client: Galaxy Cotai Project Management  
Architect: Wong & Ouyang (H.K.) Ltd.  
Area: External Basement Tanking , Podium & Roof





# Sky Pier, Tung Chung

Gammon Construction Ltd.

## THEME COATING



## PROJECT DESCRIPTION

**SkyPier (海天客運碼頭)** is a cross-boundary ferry pier in Hong Kong International Airport, Chek Lap Kok, New Territories, Hong Kong. It is operated by Hong Kong International Airport Ferry Terminal Services Limited, a joint venture company of Chu Kong Passenger Transport Co. Ltd. and Shun Tak-China Travel Ship Management Limited. At this pier, passengers abroad can transit from Hong Kong International Airport to piers in the Peal River Delta of Guangdong Province or vice-versa, without immigration and customs clearance through Hong Kong.

Kesford was responsible for supply & install the integrated colour themed plaster coating with a trowelled fine texture to the external façade as well as the installation of low V.O.C. Italian quartz coating for the architectural internal areas of Sky Pier Building.





Anti-Graffiti Coating Performance Testing in Government Buildings (ArchSD)

5 Proprietary Anti-Graffiti Coating Testing on 5 common types of wall finishing



Testing on different wall finishes

- ❑ Aluminum Siding
- ❑ Brick wall
- ❑ Stone,
- ❑ Granite
- ❑ Concrete





# Nu-Guard AG4 Graffiti Remover



Application of Nu-Guard AG4 Graffiti Remover



Clean up with water



Before Application



After application of AG4 and clean up with water

TAMAR DEVELOPMENT



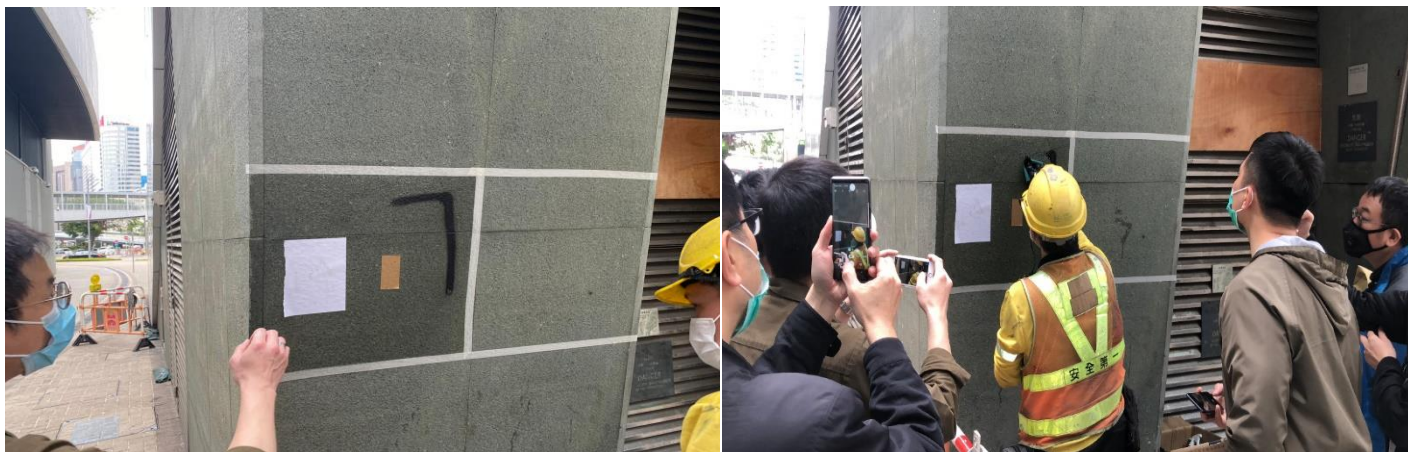
**HYDRON**  
Graffiti Removers





路政署  
HIGHWAYS  
DEPARTMENT

Nu-Guard AG Clear & Colour Anti-Graffiti Coating For Granite Finishes



□ Nu-Guard AG surface tested with spray paint / sticker

□ Cleaning by Water



□ Cleaning by Water Jet

Anti-GRAFFITI & ANTI- FLYPOSTING  
COATING SYSTEM





香港聖公會

## □ HSKSH TKO Church



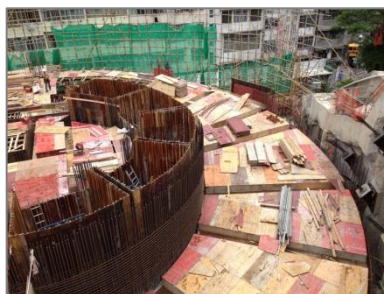
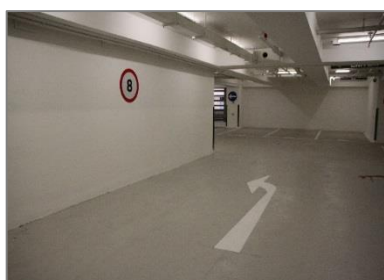
- Clean up with Hydron SS2 Mould or Algae Remover
- Clean up with Hydron BC2 Brick Cleaner
- Coated with Hydron Nu-Cryl WRS Protective Sealer



**Nu-Cryl<sup>®</sup> AG**  
Clear Protection

Hydron SS2 kills spores of mould and algae and will prevent the growth of new spores for up to 3 years



*Caritas Medical Centre Phase 2***•Monolithic Waterproofing & Floor Hardener****•Heavy Duty Anti-Skid Epoxy Floor Coating****Project Description**

Caritas Medical Centre was founded in 1964. It is an acute general hospital with 1,019 beds that provides 24-hour Accident and Emergency Services and a full range of acute, extended care, ambulatory and community medical services for approximately 360,000 people in the northwestern part of Kowloon.

To meet the ever increasing demand and expectation in medical services, Caritas Medical Centre has started a major re-development project which had its phase I completed in 2002 - a 14-storey new block, Wai Shun Block, for accommodating all acute services. Planning for re-development of the rest of the facilities of the hospital (phase II - ambulatory, rehabilitation and supporting services) has been completed in 2014.

**Scope of Work**

**Kesford (Hong Kong) Ltd.** was responsible for the supply and installation of over 20,000s.m. of basement tanking, roofing, water tank & internal wet area waterproofing works, as well as the installation of all floor hardener and epoxy self leveling works. We provided the monolithic waterproof & floor hardener system applied by dry shake powder trowel method onto the car park floor and ramp surfaces with over 6,000s.m.

And our Heavy Duty Epoxy Self Level and Anti Skid Flooring System has also been applied to the captioned car park and plant room floor surface with over 10,000s.m.



醫院管理局  
HOSPITAL  
AUTHORITY



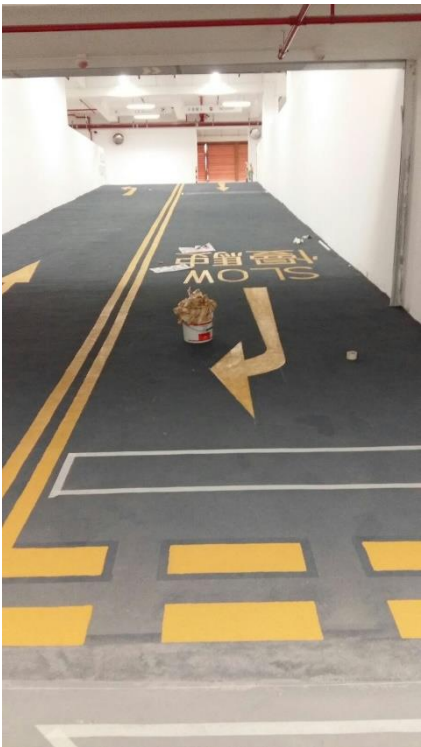


Macau Job Reference



澳門南灣湖 A 區 6 號地段

**Architect :** Chung Wah Nam Association  
**Contractor :** SOC. De Engenharia Soi Kun, LDA  
**Treated Area:** 4,500s.m.





**HSBC DATA CENTRE**  
**Tseung Kwan O, Hong Kong**

**Contractor :** Hsin Chong Construction Ltd.  
**Architect :** L & O  
**Client :** HSBC  
**Treated Area:** 1,2000m.r.



• Shek Pai Wan Phase 1 & Phase 2



• Private Independent School At Kong Siu Wan Tsuen



• Chai Wan Youth Campus, Hong Kong

**Selected Job References**

- ◆ Tuen Mun Hospital, N.T.
- ◆ Lei Muk Shue Estate Phase 3
- ◆ Lei Yue Mun Phase 2
- ◆ Hammer Hill Road Park, Kowloon
- ◆ Sands Casino Phase 2, Macau
- ◆ One Grantai, Taipa Macau





GEOTEXTILE + POLYUREA MEMBRANE

- Client :** Architectural Services Department (PSB)
- Contractor :** Able Engineering Co. Ltd.
- Area:** Existing Metal Roof Surface w/ Type All Sheet Membrane
- Treated :** 3,000s.m



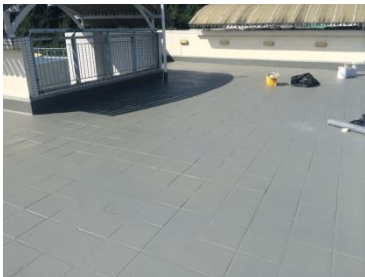
教育局 EDUCATION BUREAU



**Client :** Education Bureau  
**Contractor :** Square Construction Co. Ltd.  
**Area:** Existing Roof Surface  
**Treated :** 700s.m



HONG CHI PINEHILL SCHOOL NO.3, TAI PO







Eco Re-roofing System



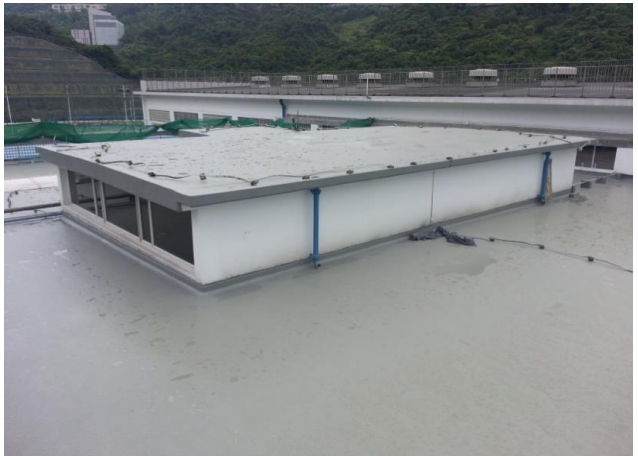
SHATIN WATER TREATMENT PLANT



**Client :** Water Supplies Department  
**Contractor :** Chun Wo Construction & Engineering Co. Ltd.  
**Area:** Existing Roof Surface  
**Treated :** 900s.m

Selected WSD Re-roofing Job References

- ◆ Ho Chung Water Treatment Pump Room
- ◆ Sai Kung Tai Mong Tsai Pumping Station
- ◆ Long Keng Pumping Station





## Contact Us

If you have any questions or problems related to building waterproofing, floor and wall coating, re-roofing, concrete repairs or renovation, we can help! We offer a free consultation service so please do not hesitate to contact us and we will try our very best to assist you.

Room 1613, 16/F.,  
Tak Fung Industrial Centre,  
168 Texaco Road, Tsuen Wan, N.T.

[www.kesford.com.hk](http://www.kesford.com.hk)  
[info@kesford.com.hk](mailto:info@kesford.com.hk)

p: +852 2396 8813  
f: +852 2406 7038

Waterproofing

Coating

Flooring

Expansion  
Joint

Concrete  
Repair

Re-roofing

