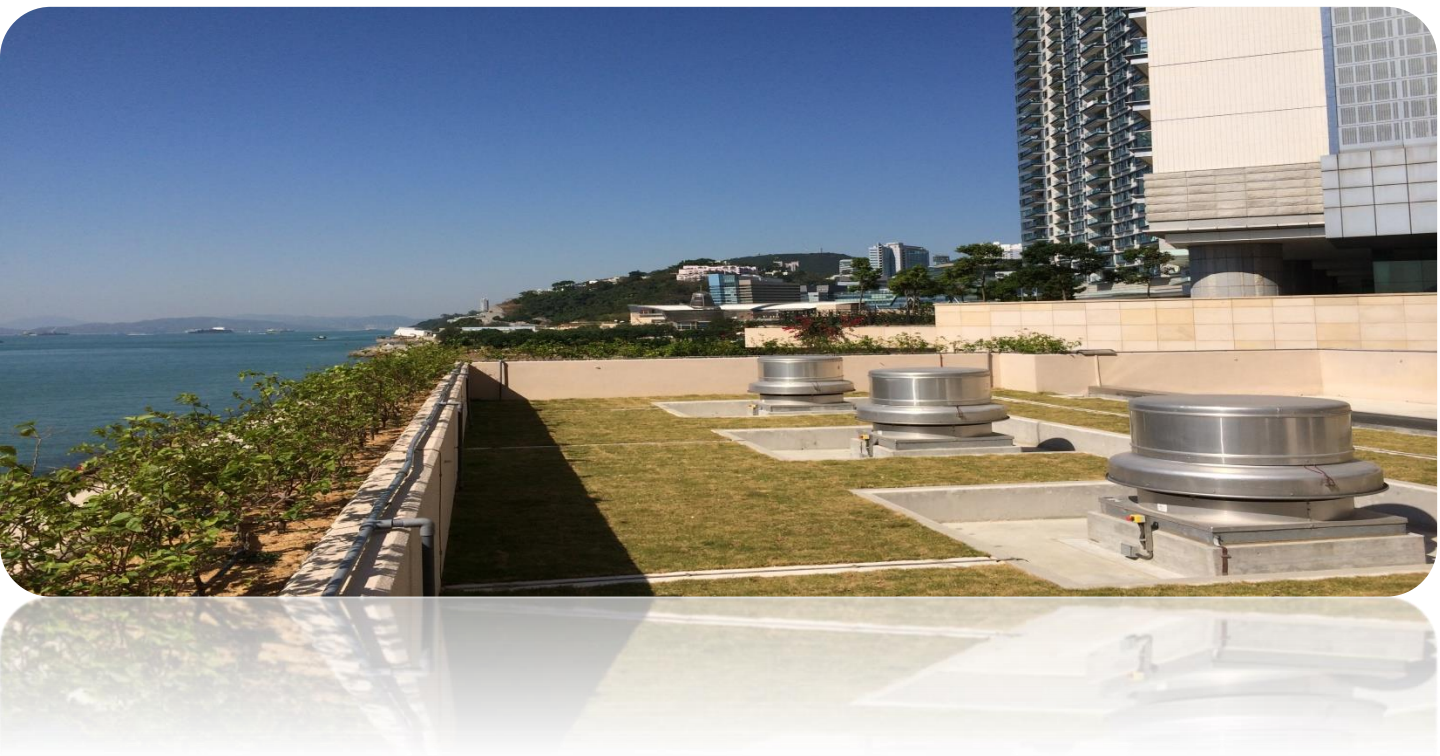


Expansion
Joint

Kesford

Expansion Joint
Job Reference





HSBC DATA CENTRE
Tseung Kwan O, Hong Kong

Contractor : Hsin Chong Construction Ltd.
Architect : L & O
Client : HSBC
Treated Area: 1,2000m.r.



Selected Job References

- ◆ Tuen Mun Hospital, N.T.
- ◆ Lei Muk Shue Estate Phase 3
- ◆ Lei Yue Mun Phase 2
- ◆ Hammer Hill Road Park, Kowloon
- ◆ SIP Project
- ◆ Open Space College of HKU



• Shek Pai Wan Phase 1 & Phase 2



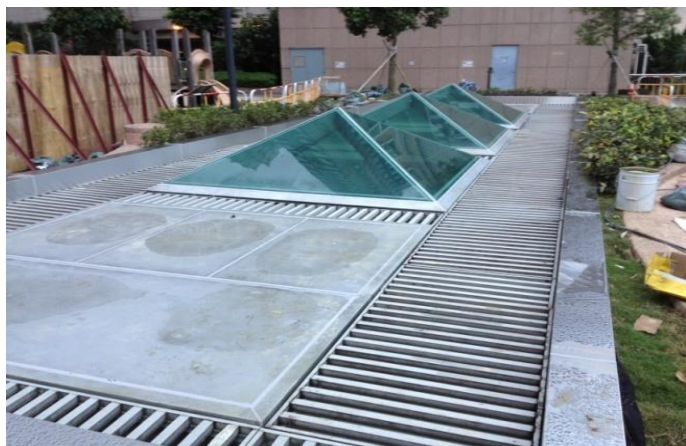
• Private Independent School At Kong Siu Wan Tsuen



• Chai Wan Youth Campus, Hong Kong



新世界發展有限公司
New World Development Company Limited



DISCOVERY PARK SHOPPING MALL, TSUEN WAN

Client : New World Development
Contractor : Hip Shing Construction Co. Ltd.
Area: Sky Light Surface & Expansion Joint
Treated : 1,200s.m



PROPOSED RESIDENTIAL DEVELOPMENT TAN KWAI TSUEN ROAD, YUEN LONG, NEW TERRITORIES. LOT NO. 4309 IN D.D. 124



PODIUM & EVA ROAD EXPANSION WATERPROOFING

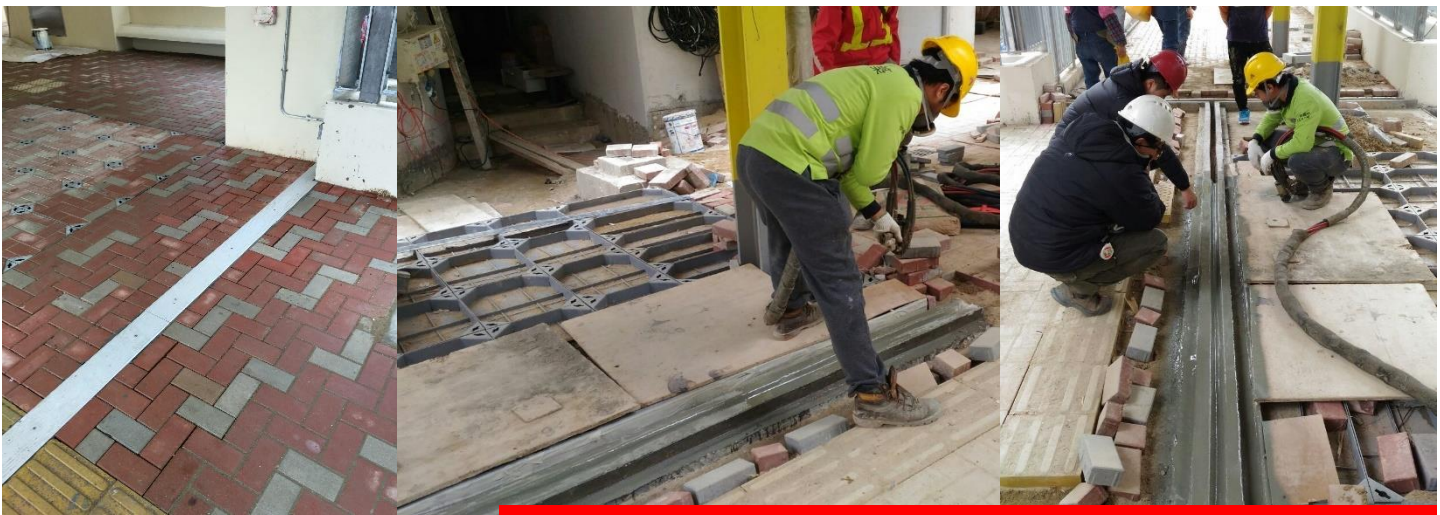
Consultant : P&T
Contractor : Unistress Construction Co. Ltd.
Client : Paliburg Development
Product: Polyurea Expansion Joint System

 **香港房屋委員會
Hong Kong Housing Authority**



HKHA – SO UK ESTATE, PHASE 1, KOWLOON

Consultant : HKHA
Contractor : Shui On Construction Co. Ltd.
Client : HKHA
Product: Hydrolink Metal Cover & Polyurea Expansion Joint System



POLYUREA EXPANSION JOINT WATERPROOFING SYSTEM

One Grantai, Tai Tam Shan, Macau

•Heavy Duty Expansion Joint & Seamless Durable Membrane System



Architect : P&T
Treated Area : Podium & Car Ramp



聖羅撒女子中學中文部
COLEGIO DE ST. ROSA DE LIMA (SC)



Contractor : Lai Si Construction & Engineering Co. Ltd.
Architect : Joy Choi Architect
Client : 澳門聖羅撒女子中學





AAHK – HONG KONG AIRPORT TERMINAL 1

Consultant : AAHK
Product: NUKOTE ST Polyurea Expansion Joint System
REDLine Expansion Joint System



POLYUREA EXPANSION JOINT WATERPROOFING SYSTEM



Residential Development at TW7, West Rail Station, Tsuen Wan, N.T.

Consultant : Hsin Yieh
Contractor : Excel Construction Ltd.
Client : MTRC
Product: Polyurea Expansion Joint System
Area: 70m.r. Metal Roof)



Residential Development at TW5, West Rail Station, Tsuen Wan, N.T.



Consultant : Hsin Yieh
Contractor : Aggressive Construction Co. Ltd.
Client : MTRC
Product: HYDROLINK Expansion Joint System
Area: 3,000m.r. (EVA, Podium & Carpark)



Water Supplies Department
The Government of the Hong Kong
Special Administrative Region



CONTRACT NO. 10/WSD/09

SALT WATER SUPPLY SYSTEM FOR POK FU LAM

Consultant : ARUP
Contractor : Law Chi Yip Construction Co. Ltd.
Client : Water Supplies Department
Product : Polyurea Expansion Joint System





HYDROLINK EXPANSION JOINT COVER & WATERPROOFING SYSTEM

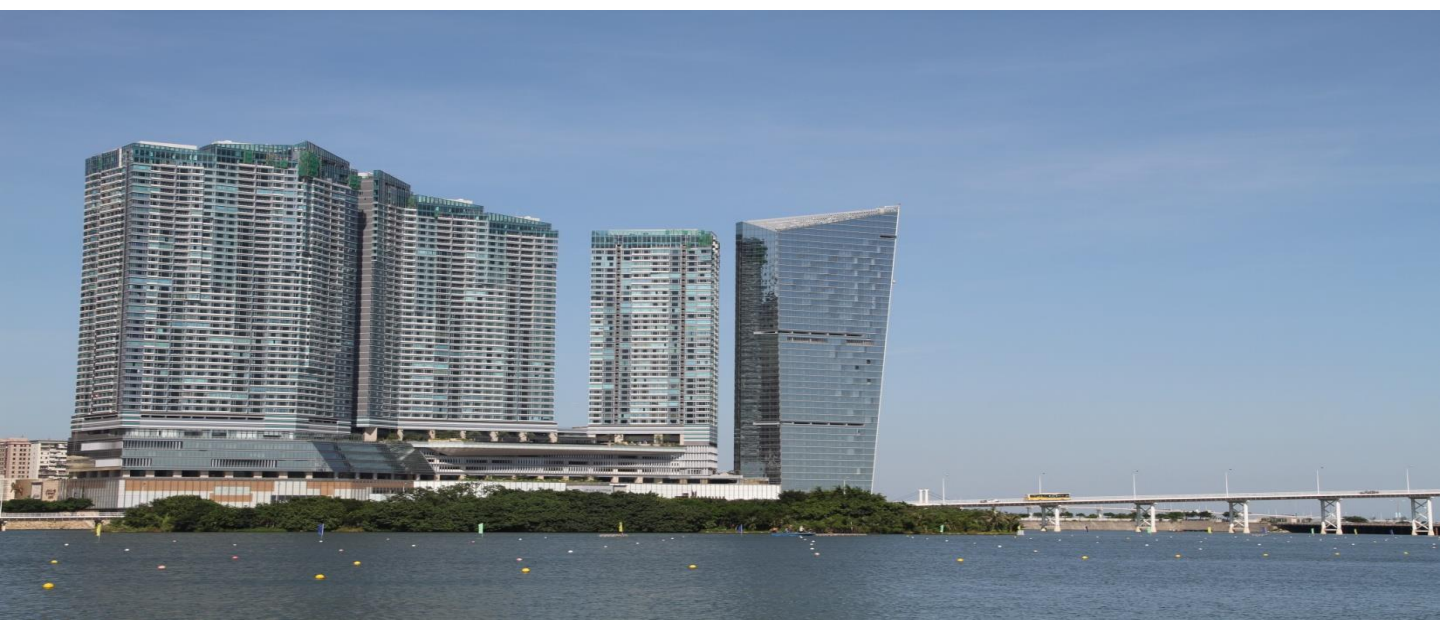
Consultant : HKHA
Contractor : Shui OnConstruction Co. Ltd.
Client : HKHA
Product: Polyurea Expansion Joint System





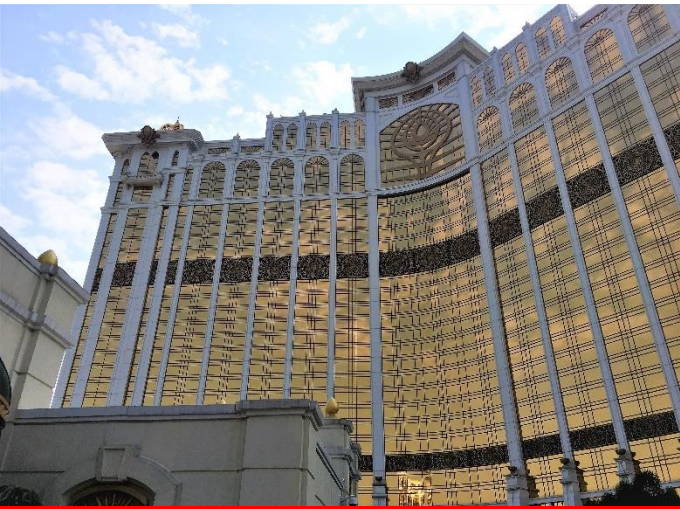
SANDS MACAU, PHASE 2

Contractor : Hsin Chong (Macau) Engineering Co. Ltd.
Architect : Aedas
Client : Venetian Cotai Ltd.



One Central, Macau

Contractor : Hip Hing Engineering (Macau) Co. Ltd.
Architect : Wong Tung & Partner
Client : Shan Tak Holding Ltd. / Hong Kong Land



Galaxy PHASE 2, MACAU

Client : Galaxy Entertainment Management
Consultant : Wong & Ouyang
Product: HYDROLINK Expansion Joint Cover & WaterproofingSystem

Polyurea Waterproofing

Expansion Joint Waterproofing



TINS' INDUSTRIAL CENTER, TUEN MUN

EXPANSION JOINT WATERPROOFING SYSTEM



ASIA TERMINALS LTD.



POLYUREA EXPANSION JOINT WATERPROOFING SYSTEM

Polyurea Waterproofing

Expansion Joint Waterproofing

MAPLE TREE LOGISTICS CENTER



POLYUREA EXPANSION JOINT WATERPROOFING SYSTEM

Consultant : ALKF Architect
Contractor : Able Engineering Co. Ltd.
Client : Maple Tree
Product: Polyurea Expansion Joint System
Area: Expansion Joint On Driveway of Roof



DRIVEWAY EXPANSION JOINT WATERPROOFING



Contact Us

If you have any questions or problems related to building waterproofing, floor and wall coating, re-roofing, concrete repairs or renovation, we can help! We offer a free consultation service so please do not hesitate to contact us and we will try our very best to assist you.

Room 1613, 16/F.,
Tak Fung Industrial Centre,
168 Texaco Road, Tsuen Wan, N.T.

www.kesford.com.hk
info@kesford.com.hk

p: +852 2396 8813
f: +852 2406 7038

**Expansion
Joint**