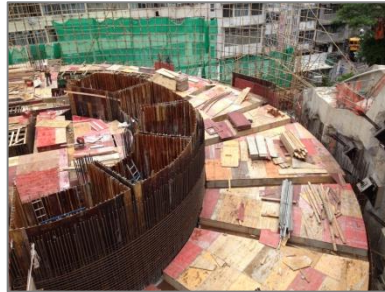


# Kesford

## Flooring Job Reference



*Caritas Medical Centre Phase 2***•Monolithic Waterproofing & Floor Hardener****•Heavy Duty Anti-Skid Epoxy Floor Coating****Project Description**

Caritas Medical Centre was founded in 1964. It is an acute general hospital with 1,019 beds that provides 24-hour Accident and Emergency Services and a full range of acute, extended care, ambulatory and community medical services for approximately 360,000 people in the northwestern part of Kowloon.

To meet the ever increasing demand and expectation in medical services, Caritas Medical Centre has started a major re-development project which has its phase I completed in 2002 - a 14-storey new block, Wai Shun Block, for accommodating all acute services. Planning for re-development of the rest of the facilities of the hospital (phase II - ambulatory, rehabilitation and supporting services) has been completed in 2014.

**Scope of Work**

**Kesford (Hong Kong) Ltd.** was responsible for supply and installation over 20,000s.m. of basement tanking, roofing, water tank & internal wet area waterproofing works, as well as the installation of all floor hardener and epoxy self leveling works. We provided the monolithic waterproof & floor hardener system applied by dry shake powder trowel method onto the car park floor and ramp surfaces with over 6,000s.m.

And our Hydrolink Heavy Duty Epoxy Self Level and Anti Skid Flooring System has also been applied to the captioned car park and plant room floor surface with over 10,000s.m.



醫院管理局  
HOSPITAL  
AUTHORITY

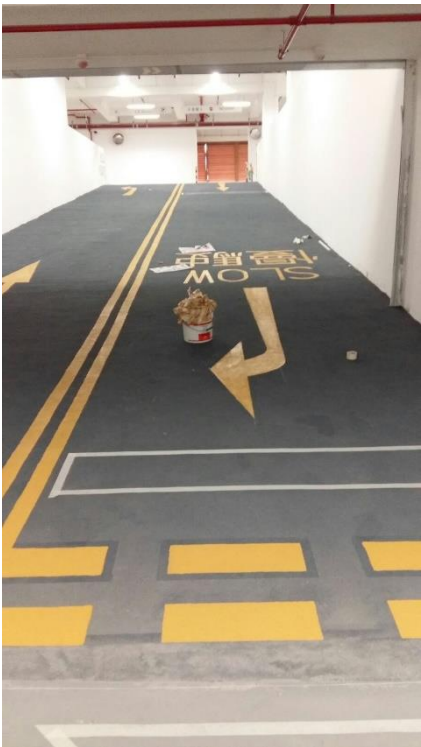


Macau Job Reference



澳門南灣湖 A 區 6 號地段

**Architect :** Chung Wah Nam Association  
**Contractor :** SOC. De Engenharia Soi Kun, LDA  
**Treated Area:** 4,500s.m.







**TKO Residential Development At TKO Area  
70, Package 3**

**Architect :** MLA Association  
**Contractor :** Lanon Construction Co. Ltd.  
**Client :** MTRC  
**Treated Area:** 20,000s.m.

---



Hallow International School, Tuen Mun

Architect : P&T Architect  
Contractor : Able Engineering Co. Ltd.  
Treated Area: 2,000s.m.



Maple Tree Tsing Yi Logistic Centre

Architect : Andrew LKF  
Contractor : Able Construction Co. Ltd.  
Client : Maple Tree  
Treated Area: 3,000s.m.





Customs Headquarters Building

**Architect :** Simon Kwan Association  
**Contractor :** Shui On Construction Co. Ltd.  
**Client :** Architectural Services Department  
**Treated Area:** 2,000s.m.



An Integrated Teaching Building  
Chinese University of Hong Kong

**Architect :** Percy Thomas  
**Contractor :** Able Construction Co. Ltd.  
**Client :** Chinese University of Hong Kong  
**Treated Area:** 3,000s.m.

Selected Job References

- ◆ Caritas Medical Centre Phase 2
- ◆ Western District Sport Center
- ◆ Tseung Kwan O Sport Center
- ◆ China Shing Kwong Church
- ◆ Hong Kong Baptist Hospital





## Contact Us

If you have any questions or problems related to building waterproofing, floor and wall coating, re-roofing, concrete repairs or renovation, we can help! We offer a free consultation service so please do not hesitate to contact us and we will try our very best to assist you.

Room 1613, 16/F.,  
Tak Fung Industrial Centre,  
168 Texaco Road, Tsuen Wan, N.T.

[www.kesford.com.hk](http://www.kesford.com.hk)  
[info@kesford.com.hk](mailto:info@kesford.com.hk)

p: +852 2396 8813  
f: +852 2406 7038

Flooring