

**Kesford**

# Hong Kong Job Reference



**Waterproofing**

**Coating**

**Flooring**

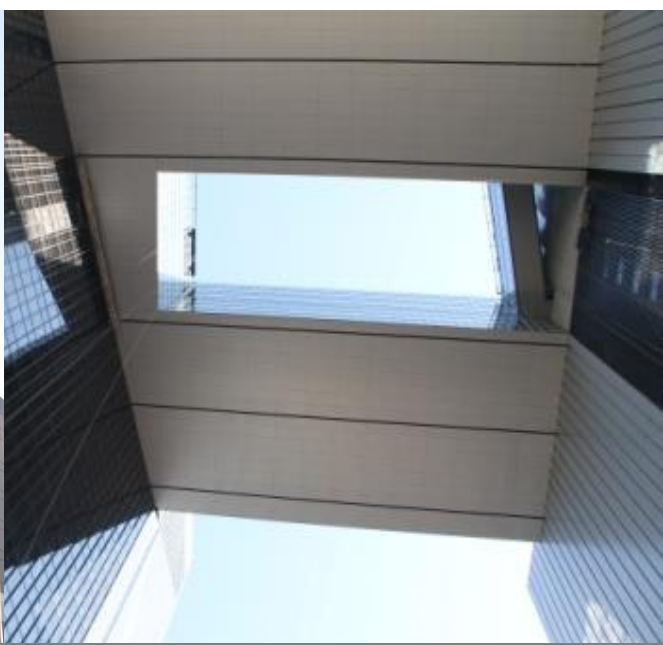
**Expansion  
Joint**

**Concrete  
Repair**

**Re-roofing**



Architectural Services Department



GAMMON HIP HING JV | TAMAR DEVELOPMENT



**Project**

The impressive Central Government Complex Tamar is the new location of the offices of the Government of Hong Kong Special Administrative Region. The 42,000s.m plot is among the most prestigious and most expensive ones in Hong Kong. The project uses neither Chinese nor European government building design, but instead it is a mix of postmodern architecture and low-frills international design. The building's multistory underground car park and facility quarters reaching deep into groundwater, thus required reliable waterproofing.

**Solution**

**Kesford** had completed over 100,000s.m. waterproofing works for all podiums, flat roofs, water tanks, lift pit, external wall and internal wet areas. And our spray applied polyurea membrane was also applied onto the garden roof of a link bridge surface.







**Drainage Services Department**  
The Government of the Hong Kong Special Administrative Region



**Harbour Areas Treatment Scheme Stage 2A  
Upgrading Works at Stonecutters Island  
Sewage Treatment Works**

**Consultant :** AECOM  
**Contractor :** Sun Fook Kong – Biwater Joint Venture  
**Client :** Drainage Services Department  
**Product:** Nukote HT Polyurea  
Hydrolink Elastic Guard PU





**Water Supplies Department**

The Government of the Hong Kong Special Administrative Region



**CONTRACT NO. 10/WSD/09**

**SALT WATER SUPPLY SYSTEM FOR POK FU LAM**

Consultant : ARUP  
Contractor : Law Chi Yip Construction Co. Ltd.  
Client : Water Supplies Department  
Product: i) Polyurea Expansion Joint System  
ii) Hydrolink Elastic Guard PU Membrane



**Selected Job References**

- ◆ Cha Kwo Ling Salt Water Pumping Station
- ◆ Shatin Water Treatment Plant
- ◆ Ho Chung Pumping Station
- ◆ Long Keng Pumping Station
- ◆ Tai Mong Tsai Pumping Station





Institutional



**HONG KONG SCIENCE PARK PHASE 3A & 3B  
GAMMON CONSTRUCTION LTD.**

The Hong Kong Science Park Phases 3a and 3b project includes the construction of three 8 to 9-storey Research and Development Office and Laboratory Buildings with basement car parks, service tunnels and a link bridge between buildings, covering a construction floor area of 105,000 s.m.



**Subsidized Sales Flat Project At Tseung Kwan O Area 73A, Tseung Kwan O, Hong Kong**

**Client :** Hong Kong Housing Society  
**Architect :** DLN  
**Treated Area:** Concrete Wall & Ceiling



• Hong Kong International School At Repulse bay

**Selected Job References**

- ◆ HKHA - Pak Tin Phase 7 & 8
- ◆ HKHS – Ming Wah Dai Ha Re-development
- ◆ MTRC – Tsuen Wan West Rail Station Development Phase 5
- ◆ Ng Fong Street Commercial Building Development
- ◆ Tuen Mun 541 Residential Development
- ◆ Sky City Hotel, Hong Kong Air Port
- ◆ Westland Center, Quarry Bay, Hong Kong



• Tsuen Wan West Rail Station

• Chai Wan Youth Campus, Hong Kong



# Sky Pier, Tung Chung

Gammon Construction Ltd.



## THEME COATING

### PROJECT DESCRIPTION

**SkyPier (海天客運碼頭)** is a cross-boundary ferry pier in Hong Kong International Airport, Chek Lap Kok, New Territories, Hong Kong. It is operated by Hong Kong International Airport Ferry Terminal Services Limited, a joint venture company of Chu Kong Passenger Transport Co. Ltd. and Shun Tak-China Travel Ship Management Limited. At this pier, passengers abroad can transit from Hong Kong International Airport to piers in the Peal River Delta of Guangdong Province or vice-versa, without immigration and customs clearance through Hong Kong.

Kesford was responsible for supply & install the integrated colour themed plaster coating with a trowelled fine texture to the external façade as well as the installation of low V.O.C. Italian quartz coating for the architectural internal areas of Sky Pier Building.

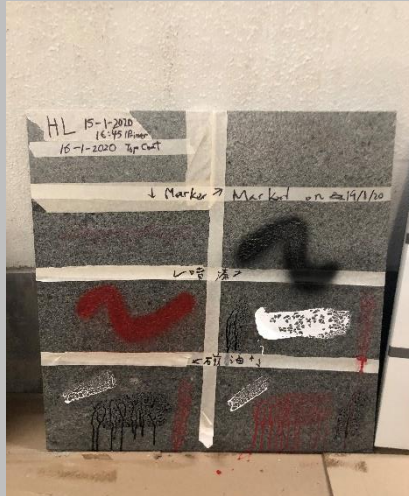
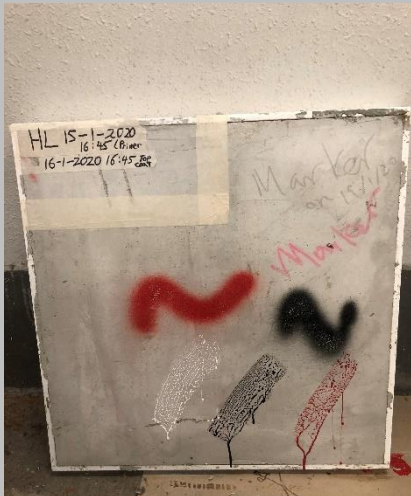




Architectural Services Department

PROTECTIVE COATING

5 Proprietary Anti-Graffiti Coating Testing on 5 common types of wall finishing



Anti-Graffiti Coating Performance Testing in Government Buildings (ArchSD)



Testing on different wall finishes

- Aluminum Siding
- Brick wall
- Stone,
- Granite
- Concrete

Anti-Graffiti Coating





GRAFFITI REMOVER



Application of Nu-Guard AG4 Graffiti Remover

Clean up with water



Before Application

After application of AG4 and clean up with water

TAMAR DEVELOPMENT

Nu-Guard AG4 Graffiti Remover



PROTECTIVE COATING

Nu-Guard AG Clear & Colour Anti-Graffiti Coating For Granite Finishes



□ Nu-Guard AG surface tested with spray paint / sticker



□ Cleaning by Water



□ Cleaning by Water Jet

Anti-GRAFFITI & ANTI- FLYPOSTING COATING SYSTEM



PROTECTIVE COATING



香港聖公會

□ HSKSH TKO Church



Hydron Stone Cleaning  
& Protective Sealer



- Clean up with Hydron SS2 Mould or Algae Remover
- Clean up with Hydron BC2 Brick Cleaner
- Coated with Hydron Nu-Cryl WRS Protective Sealer

Hydron SS2 kills spores of mould and algae and will prevent the growth of new spores for up to 3 years

*Caritas Medical Centre Phase 2*

•**Monolithic Waterproofing & Floor Hardener**



•**Heavy Duty Anti-Skid Epoxy Floor Coating**



## Project Description

Caritas Medical Centre was founded in 1964. It is an acute general hospital with 1,019 beds that provides 24-hour Accident and Emergency Services and a full range of acute, extended care, ambulatory and community medical services for approximately 360,000 people in the northwestern part of Kowloon.

To meet the ever increasing demand and expectation in medical services, Caritas Medical Centre has started a major re-development project which had its phase I completed in 2002 - a 14-storey new block, Wai Shun Block, for accommodating all acute services. Planning for re-development of the rest of the facilities of the hospital (phase II - ambulatory, rehabilitation and supporting services) has been completed in 2014.

## Scope of Work

**Kesford (Hong Kong) Ltd.** was responsible for the supply and installation of over 20,000s.m. of basement tanking, roofing, water tank & internal wet area waterproofing works, as well as the installation of all floor hardener and epoxy self leveling works. We provided the monolithic waterproof & floor hardener system applied by dry shake powder trowel method onto the car park floor and ramp surfaces with over 6,000s.m.

And our Heavy Duty Epoxy Self Level and Anti Skid Flooring System has also been applied to the captioned car park and plant room floor surface with over 10,000s.m.



醫院管理局  
HOSPITAL  
AUTHORITY







### HSBC DATA CENTRE Tseung Kwan O, Hong Kong

**Contractor :** Hsin Chong Construction Ltd.  
**Architect :** L & O  
**Client :** HSBC  
**Treated Area:** 1,2000m.r.



### Selected Job References

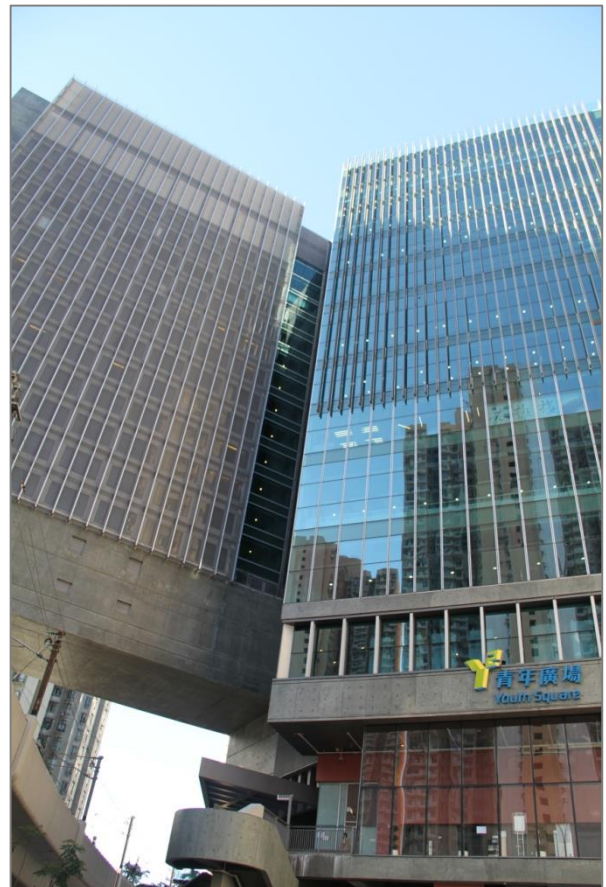
- ◆ Tuen Mun Hospital, N.T.
- ◆ Lei Muk Shue Estate Phase 3
- ◆ Lei Yue Mun Phase 2
- ◆ Hammer Hill Road Park, Kowloon
- ◆ Sands Casino Phase 2, Macau
- ◆ One Grantai, Taipa Macau



• Shek Pai Wan Phase 1 & Phase 2



• Private Independent School At Kong Siu Wan Tsuen



• Chai Wan Youth Campus, Hong Kong



**GEOTEXTILE + POLYUREA MEMBRANE**

**Client :** Architectural Services Department (PSB)  
**Contractor :** Able Engineering Co. Ltd.  
**Area:** Existing Metal Roof Surface w/ Type All Sheet Membrane  
**Treated :** 3,000s.m





教育局 EDUCATION BUREAU



**Client :** Education Bureau  
**Contractor :** Square Construction Co. Ltd.  
**Area:** Existing Roof Surface  
**Treated :** 700s.m

HONG CHI PINEHILL SCHOOL NO.3, TAI PO





水務署  
Water Supplies Department

Eco Re-roofing System



SHATIN WATER TREATMENT PLANT



**Client :** Water Supplies Department  
**Contractor :** Chun Wo Construction & Engineering Co. Ltd.  
**Area:** Existing Roof Surface  
**Treated :** 900s.m



Selected WSD Re-roofing Job References

- ◆ Ho Chung Water Treatment Pump Room
- ◆ Sai Kung Tai Mong Tsai Pumping Station
- ◆ Long Keng Pumping Station







## Contact Us

If you have any questions or problems related to building waterproofing, floor and wall coating, re-roofing, concrete repairs or renovation, we can help! We offer a free consultation service so please do not hesitate to contact us and we will try our very best to assist you.

Room 1613, 16/F.,  
Tak Fung Industrial Centre,  
168 Texaco Road, Tsuen Wan, N.T.

[www.kesford.com.hk](http://www.kesford.com.hk)  
[info@kesford.com.hk](mailto:info@kesford.com.hk)

p: +852 2396 8813  
f: +852 2406 7038

Waterproofing

Coating

Flooring

Expansion  
Joint

Concrete  
Repair

Re-roofing

