

Kesford

Waterproofing Concrete Admix Job Reference



Capillary Concrete Admixture



SUBSIDIZED SALES FLAT PROJECT AT TSEUNG KWAN O AREA 73A, N.T.

Client: Hong Kong Housing Society
Architect: DLN
Material: Penetron Admix
Application: Basement, Water Tank & Roof
Approx. Qty.: 1,200m3



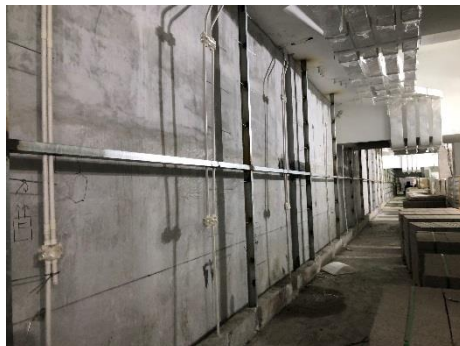
HONG KONG HOUSING SOCIETY
香港房屋協會

Capillary Concrete Admixture

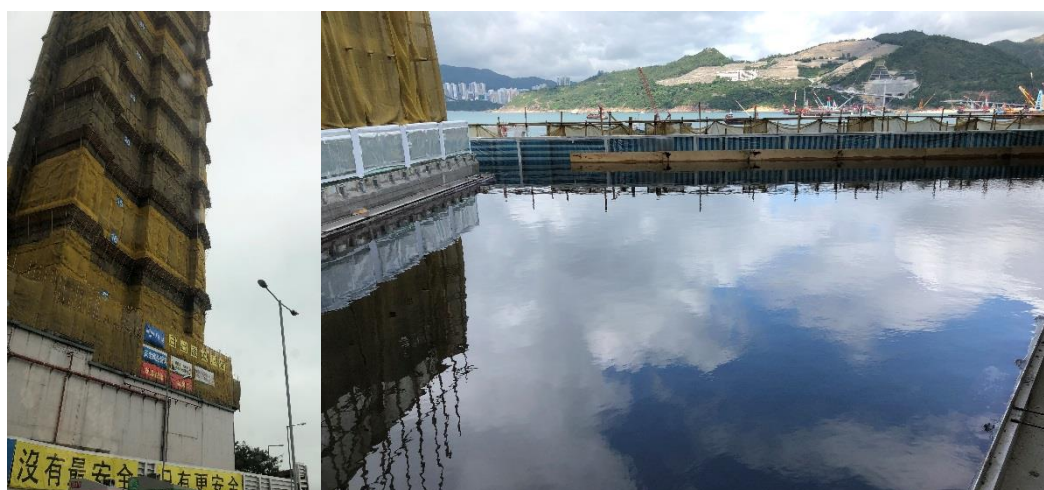


KAI TAK DEVELOPMENT
 Residential Development at NKIL No.6567 Kai Tak Area 1K, Site 1, Kai Tak, Kowloon

Client: KWG Group Holdings
 Architect: LWK & Partner Ltd.
 Material: Penetron Admix
 Application: Basement Wall, Roof, Water Tanks
 Water Feature & Swimming Pool
 Approx. Qty.: 3,500m³

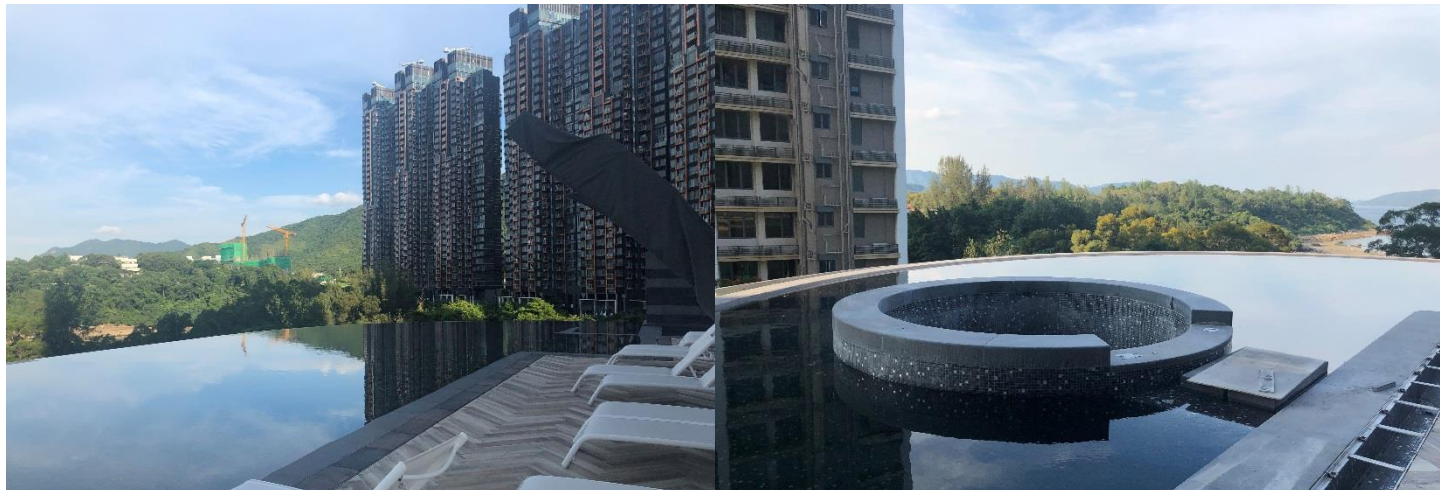


Capillary Concrete Admixture



PROPOSED RESIDENTIAL DEVELOPMENT AT TKO AREA 86, PACKAGE 8, TKO, N.T.

Architect: Hsin Yieh Architect & Associates Ltd.
Material: Penetron Admix
Application: Water Tanks & Swimming Pool
Approx. Qty.: 1,000m3



PROPOSED RESIDENTIAL DEVELOPMENT AT STTL 574, LOK WO SHA, MA ON SHAN, N.

The Proposed Residential Development For URA Project H18 (Site B), At Peel Street / Graham Street, Inland Lot No. 9038, Hong Kong

Architect: LWK & Partner Ltd.
Material: Penetron Admix
Application: Basement, Water Tanks & Swimming Pool
Approx. Qty.: 3,000m3



Capillary Concrete Admixture



The Proposed Residential Development For URA Project H18 (Site B), At Peel Street / Graham Street, Inland Lot No. 9038, Hong Kong

Architect: LWK & Partner Ltd.
Material: Penetron Admix
Application: Basement, Water Tanks & Swimming Pool
Approx. Qty.: 3,000m3



CONCRETE CRACK WAS SEALED UP BY THE CRYSTALLINIZATION OF PENETRON AND THE WATER LEAKAGE OF THE CRACK WAS STOPPED AFTER 7- 14 DAYS.

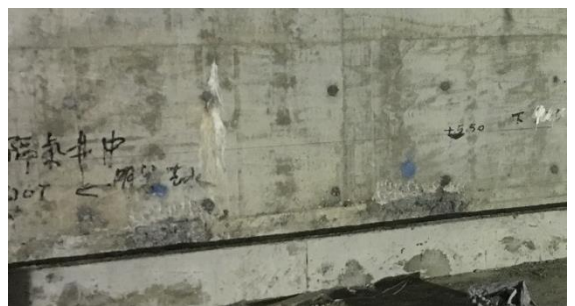


Capillary Concrete Admixture



Residential Development At
Ka Wo Li Hill Road, TMTL No. No. 434,
Tuen Mun, N.T.

Client: Golden Nice Development Ltd.
Architect: Hsin Yieh Architects & Engineers Ltd.
Material: Penetron Admix
Application: Basement
Approx. Qty.: 3,200m3



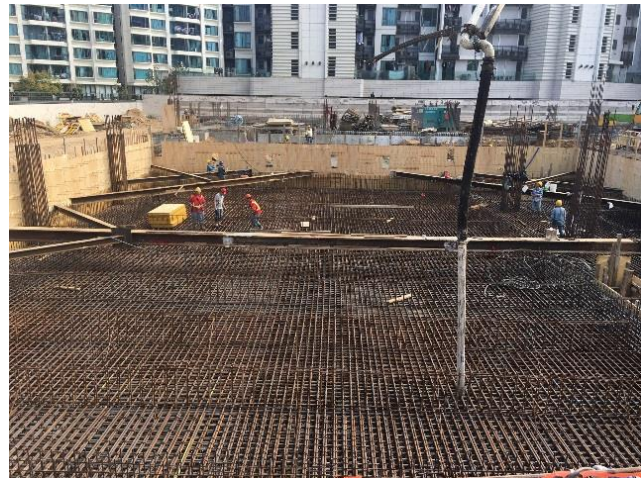
CONCRETE CRACK WAS SEALED UP BY THE CRYSTALLINIZATION OF PENETRON AND THE WATER LEAKAGE OF THE CRACK WAS STOPPED AFTER 7- 14 DAYS.

Capillary Concrete Admixture



TAI PO MALVERN INTERNATIONAL SCHOOL, PAK SHEK KOK, N.T.

Client: Malvern International School
Architect: P&T Architects & Engineers Ltd.
Material: Penetron Admix
Application: Basement
Approx. Qty.: 2,000m³



CONCRETE CRACK WAS SEALED UP BY THE CRYSTALLIZATION OF PENETRON AND THE WATER LEAKAGE OF THE CRACK WAS STOPPED AFTER 7- 14 DAYS.

Capillary Concrete Admixture

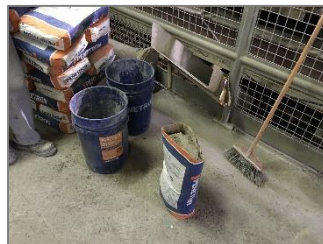


Hong Kong International School

**Hong Kong International School
Lower Primary School, Repulse Bay,
Hong Kong**

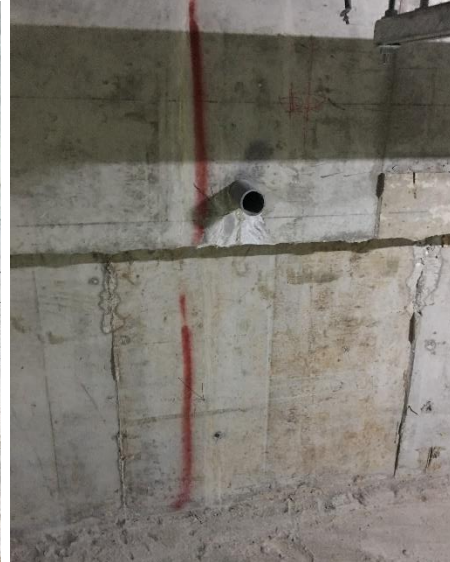
Client: Hong Kong International School
Architect: Nelson Chen Architects Ltd.
Material: Penetron Admix
Application: Swimming Pool, Basement & Water Tanks
Approx. Qty: 3,200m³

Nelson Chen Architects Ltd
陳丙驊建築師有限公司



KESFORD has supplied and installed Penetron Admix waterproofing concrete to the project of New Hong Kong International School in 2015. Kesford has completed over 3,200m³, including the application areas of basement wall and slab, swimming pool and water tanks.

Capillary Concrete Admixture



CONCRETE CRACK WAS SEALED UP BY THE CRYSTALLINIZATION OF PENETRON AND THE WATER LEAKAGE OF THE CRACK WAS STOPPED AFTER 14 DAYS.

**Hong Kong International School
Lower Primary School**

Nelson Chen Architects Ltd
陳丙驊建築師有限公司

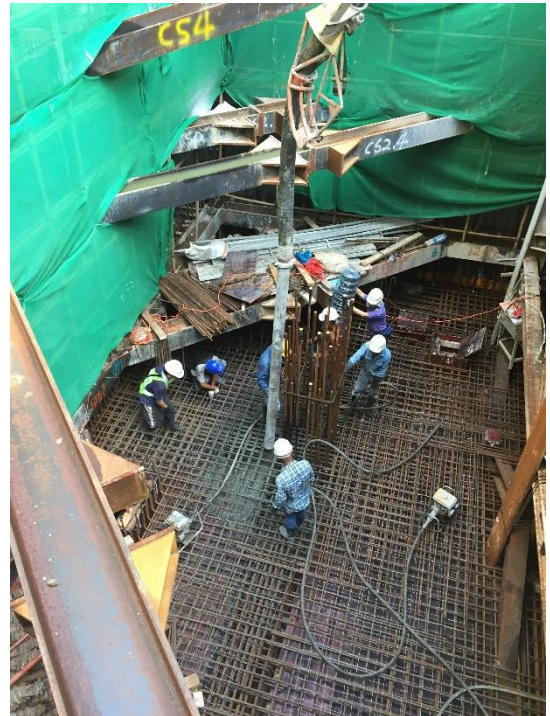


Capillary Concrete Admixture



Proposed Hotel Development at 10 & 12 Kimberley Street
TSIM SHA TSUI, HONG KONG

Architect: Associated Architects Ltd.
 Material: Penetron Admix
 Application: Basement
 Approx. Qty.: 600m³



KESFORD was responsible for all site record, site mixing, quality assurance & quality control... of Penetron Admix application on site.



Contact Us

If you have any questions or problems related to building waterproofing, floor and wall coating, re-roofing, concrete repairs or renovation, we can help! We offer a free consultation service so please do not hesitate to contact us and we will try our very best to assist you.

Room 1613, 16/F.,
Tak Fung Industrial Centre,
168 Texaco Road, Tsuen Wan, N.T.

www.kesford.com.hk
info@kesford.com.hk

p: +852 2396 8813
f: +852 2406 7038

Waterproofing