

WATERPROOFING
MOVEMENT JOINT
FLOORING SYSTEM
PROTECTIVE COATING
RE-ROOFING WORKS



CONTENTS

Company Introduction.....	2
Waterproofing.....	3
Movement Joint.....	9
Flooring.....	11
Protective Coating.....	13
Re-roofing.....	14
Macau Job Reference.....	15
Hong Kong Job Reference.....	17
Customer’s Appreciation, Clients & Partners.....	22

KESFORD IS SPECIALISED IN



Waterproofing



Movement Joint



Flooring System



Protective Coating



Re-roofing

WHO WE ARE

Kesford (Hong Kong) Limited is a leading construction service provider renowned for excellence across a range of specialties since 2001. Our diverse construction services include Waterproofing System, Proprietary Movement Joint System, Floor Hardening/Coating System, Protective Coating System, and Re-roofing System, positioning us as a reliable partner for clients seeking high-quality craftsmanship at affordable prices.

At KESFORD, we prioritize safety and quality by utilizing our well-equipped contracting team to provide expert advice on product selection and application methods to meet the varying needs of each project. We have honed our skills and experience over the years, delivering a comprehensive one-stop service tailored to meet each client's unique requirements. Our unwavering commitment to exceeding clients' expectations through unparalleled solutions has enabled us to build lasting relationships with stakeholders in both the public and private sectors.

Choose KESFORD as your reliable technical service provider and experience the difference our wealth of experience, expertise, and commitment to excellence can make in your next construction project.



WATERPROOFING

KESFORD, a prominent provider of exceptional waterproofing solutions, offers a range of services catering to every need of the client. The company provides a comprehensive range of waterproofing solutions using the latest materials and techniques that ensure optimal performance and longevity even in the harshest environments. KESFORD's waterproofing systems are built with the highest standards of quality, safety, and environmental sustainability in mind, utilizing materials sourced from prominent global brands across North America, Europe, and Asia, and protect every corner of buildings from the basement to the roof from both internal wet areas to external walls.

KESFORD provides nearly all types of waterproofing materials, including Crystalline Concrete Admixture, Integral Crystalline Waterproofing, High Performance Flexible Cementitious Slurry, Innovative Spray Applied Polyurea Membrane, Seamless Elastomeric Liquid Membrane, Composite Monolithic Rubberized Asphalt Membrane, Preformed/Pre-applied Sheet Membrane and Nanotechnology-Based Silicon/Silicate/Silane Waterproofing. Additionally, we provide waterproofing accessories like water-stop, water-leakage repair materials, drainage layer, air-vent, etc.

Composite Monolithic

Rubberized Asphalt Membrane

**Innovative
Spray Applied
Polyurea Membrane**



Preformed Sheet Membrane



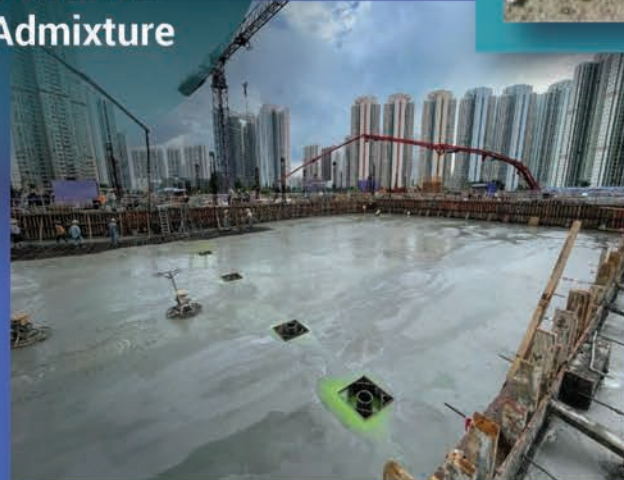
**Integral
Crystalline
Waterproofing**

Nanotechnology-Based

Silicon/ Silicate/ Silane Waterproofing



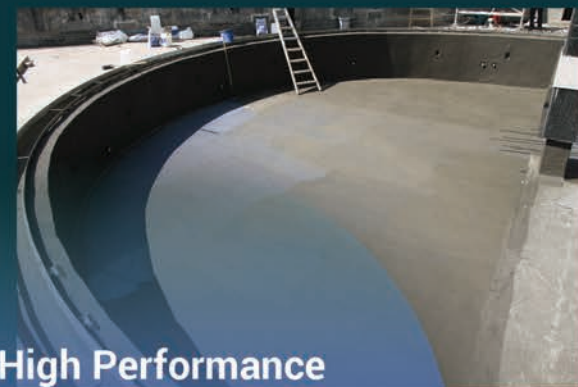
**Crystalline
Concrete
Admixture**



Seamless Elastomeric Liquid Membrane



**High Performance
Flexible Cementitious
Slurry**



KESFORD offers comprehensive programs that include in-depth testing and inspection services for all completed works. These programs are designed to give clients complete confidence in the durability and effectiveness of the solutions provided, and the team of experts utilizes cutting-edge techniques and technologies to perform a variety of quality assurance test services, including Destructive & Non-destructive Thickness Test, Infra-red Thermography Surveys, Water Seepage Investigation, Spark (Holiday) Test Surveys, Bonding/Pull-off Test, and Moisture Test.

**Destructive &
Non-destructive
Thickness Test**



**Infra-red
Thermography
Surveys**



**Water Seepage
Investigation**



Spark Test



With over 20 years of experience and expertise in building industry,

KESFORD's contracting team works closely with clients to identify and customize suitable waterproofing systems for their specific needs, ensuring the utmost commitment to client satisfaction.

KESFORD caters to a comprehensive range of waterproofing options on various locations, and our specialized knowledge, honed skills, and extensive experience produce premium-quality waterproofing systems that exceed even the most demanding requirements.

A. Basement

Basement conversions are becoming increasingly popular. In urban areas like HONG KONG where space is at a premium, these conversions and in turn basement waterproofing services are much in demand. Completed correctly, basement conversions are a great option for creating desirable space. KESFORD has offered various advanced technology damp proofing and waterproofing systems to ensure basements stay dry and achieve the environment your client desires.

Water ingress into a basement can lead to serious damage and be costly to sort, so choosing the best waterproofing system for your basement is vital.



Spray Applied Polyurea Membrane with Geotextile for Blind Side



Pre-applied Key Bonded Sheet Membrane for Blind Side



Spray Applied Polyurea Tanking Membrane with Primer for Open Cut



Crystalline In-depth Penetration Cementitious System for Internal Tanking



Crystalline Waterproofing Concrete Admixture



Vapour Proof Membrane for Basement / Ground Slab Underneath



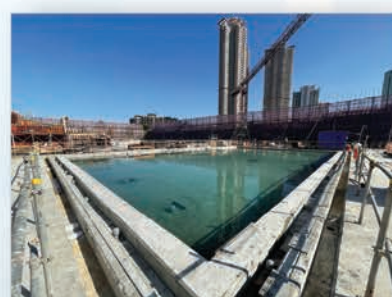
Composite Drainage & Polyurea Membrane System



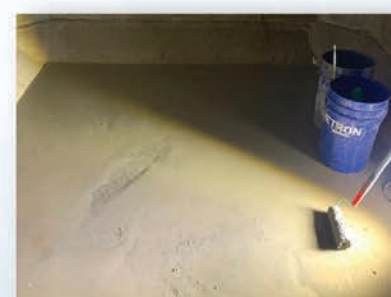
Composite Drainage & Preformed Sheet Membrane

B. Water Retaining Structure

Water retaining structures such as swimming pools, water features, water tanks, and sewage tanks require reliable and durable waterproofing solutions to prevent water leakage and damage. Waterproofing for tanks, in particular, requires a non-toxic, high water pressure resistance, and chemical resistance characteristics. Our selection of waterproofing is tailored to meet the specific needs of different structures, including:



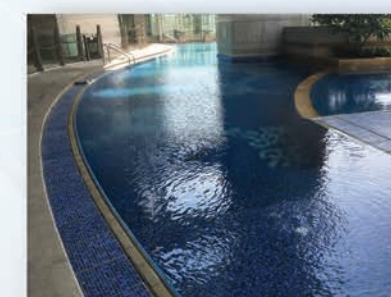
Crystalline Waterproofing Concrete Admixture System



Crystalline In-depth Penetration Cementitious System



Flexible Cementitious Waterproofing



Liquid Membrane for Water Feature



Polyurea Membrane for Water Feature



Polyurea Membrane for Potable Water Tank



Polyurea Membrane for Sewage Tank



Polyurea Membrane for Sewage Chemical Tank

WATERPROOFING

C. Internal Wet Area

Some of the internal wet areas that typically require waterproofing include bathroom, shower and kitchen. Flexible cementitious waterproofing is a reliable and effective solution for improving bonding and preventing cracking in internal wet areas. Also, it is highly effective at preventing water damage, mold growth, and other issues that can arise from moisture buildup.



Flexible Cementitious Waterproofing



Flexible Cementitious Waterproofing



Flexible Cementitious Waterproofing

D. Roof/Podium/Garden Roof

Roof waterproofing for the buildings acts as a barrier protecting the building against rain. The selection of waterproofing materials and systems will depend on location, substrate condition, and intended use of the structure. Here's some types of waterproofing materials available for roof, podium, metal roof, garden roof and planter that we provide:



Liquid Applied Waterproofing Membrane



Liquid Applied Waterproofing Membrane



Sheet Membrane



Spray Applied Polyurea Membrane



Spray Applied Polyurea Membrane



Spray Applied Polyurea Membrane

E. Others

Other locations such as bridge deck, external wall, and precast/fair-faced concrete also require waterproofing solutions to prevent water penetration and damage. There are several types of waterproofing materials that can be used for these locations, such as:



PU Liquid Membrane



Acrylic UV-Resistance Membrane



Silica Waterproofing & Protective Coating



Silane Concrete Protective Coating

Selection of Different Waterproofing System by Location														
	BASEMENT (EXTERNAL TANKING)	BASEMENT (INTERNAL TANKING)	SEWAGE TREATMENT PLANTS	WATER RETAINING STRUCTURE	BRIDGE & TUNNEL	FLAT ROOF	TOP ROOF	GARDEN ROOF	METAL ROOF	EVA & PODIUM	CARPARK FLOOR	SWIMMING POOLS	PLANTER/ WATER FEATURE	INTERNAL WET AREA
CRYSTALLINE CONCRETE ADMIXTURE	★	★	★	★	★	★	★	★	★	★	★	★	★	★
CAPILLARY CEMENTITIOUS WATERPROOFING	★	★	★	★	★	★	★	★	★	★	★	★	★	★
FLEXIBLE CEMENTITIOUS MEMBRANE	★	★	★	★	★	★	★	★	★	★	★	★	★	★
SPRAY APPLIED POLYUREA MEMBRANE	★	★	★	★	★	★	★	★	★	★	★	★	★	★
COLD APPLIED PU LIQUID MEMBRANE	★	★	★	★	★	★	★	★	★	★	★	★	★	★
SILICON RESIN/ SILANE WATERPROOFING SYSTEM	★	★	★	★	★	★	★	★	★	★	★	★	★	★
HOT APPLIED MONOLITHIC MODIFIED RUBBERIZED ASPHALT	★	★	★	★	★	★	★	★	★	★	★	★	★	★
SELF ADHESIVE & HOT TORCH APPLIED SHEET MEMBRANE	★	★	★	★	★	★	★	★	★	★	★	★	★	★
BITUMINOUS COATING	★	★	★	★	★	★	★	★	★	★	★	★	★	★
ACRYLIC (WATER BASE) MEMBRANE	★	★	★	★	★	★	★	★	★	★	★	★	★	★
BENTONITE GEOTEXTILE WATERPROOFING SYSTEM	★	★	★	★	★	★	★	★	★	★	★	★	★	★
★ RECOMMENDED														
★ SUITABLE														

Disclaimer: The suggestions in above comparison table is based on general scenario and is for reference only. Final selection of waterproofing system should also consider site condition, budget and architectural reasons. Kesford does not hold responsible for any undesirable outcomes on selections based on this table.



Introducing KESFORD's proprietary expansion joint system -

Designed as the perfect solution for relieving stress on building materials caused by thermal expansion and contraction, sway, seismic events, static load deflection, and live load deflection. Our high-quality expansion joint system features a mid-structure separation designed to bisect the entire structure, marking a gap that runs through all building assemblies such as car park driveways, decks, walls, plazas or split slab concourses, roofs, foundation floors and walls, planters and green roofs, fire-rated demising walls and floors, interior floors, and more.

Each step of the development and installation process has been carefully considered to ensure maximum reliability, ease of installation and maintenance, and the capability to withstand various environmental factors. Our team of experts conducts in-depth research to assess project requirements and determine the location-specific needs, resulting in a design that meets necessary codes and regulations. We develop several prototypes to test the design, ensuring safety, durability, and quality control measures are met.



Application of Movement Joints

We understand that restoring the fireproofing, waterproofing, soundproofing, roof membrane, trafficable surface, and all other building element functions requires filling this gap, and we offer movement joint elements, including fire barriers and waterproofing, to meet all your project needs.

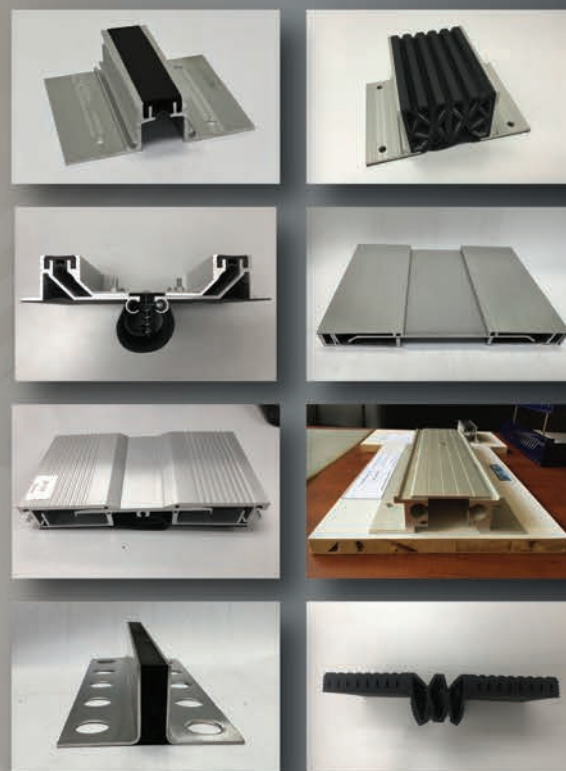
Our selection of materials guarantees a product that can withstand harsh weather conditions, resist water and substances, and fulfill aesthetic requirements. Our production process strictly adheres to design guidelines and specifications, and we maintain rigorous quality control measures to ensure the longevity and success of our proprietary expansion joint system.

MOVEMENT JOINT

Completed Movement Joints



Hi-Link MS Movement Joint Models



RedLINE®

Waterproof Expansion Joint

A properly designed joint must remain waterproof and weather tight for the service life of a building. RedLINE waterproof expansion joint system solves this dilemma. Unlike other products which are "covers", RedLINE joints act as both an expansion joint and waterproofing. The monolithic factory vulcanized seam allows for the same elasticity at the seam as anywhere else on the joint, thereby making a RedLINE joint watertight. RedLINE joints are installed flat in all applications. The flat profile of the expansion joint does not obstruct the flow of water to drains.



Single-Ply Installation



Hot Rubberized Asphalt Installation



Epoxy Resin Installation

FLOORING SYSTEM

KESFORD offers innovative, high-performance floor hardening and coating solutions to various industries.

TOWER 6-7座
CLUB ONTARIO會所

Our customizable services cater to commercial, industrial, and residential projects, promising long-lasting solutions that meet every demand. Our range of cutting-edge flooring and coating systems includes dry shake monolithic hardener, epoxy/cement self-leveling screed, and liquid hardener/dust proofer. We also provide polyurethane and epoxy-based products, including our renowned polyurea coating technology, offering unparalleled durability in all applications.

KESFORD's diverse range of flooring systems resists stains, chemicals, everyday wear and tear, and exceptional aesthetic appeal, anti-skid surfaces, smoothness, and hard-wearing surfaces. We specialize in bespoke flooring solutions, providing custom and tailor-made solutions that meet individual requirements, adding value and protection to floors.

Our flooring experts analyze project requirements, budget, and provide cost-effective, hassle-free solutions that deliver long-lasting and dependable results, minimizing downtime and maximizing efficiency levels for clients. KESFORD also provides a comprehensive range of floor preparation equipment and tools, ranging from state-of-the-art to the most efficient and dependable equipment in the market, catering to every budget and requirement.



FLOORING AND COATING SYSTEM

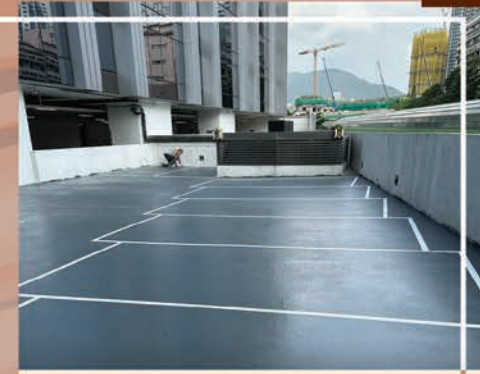
P.12



Dry Shake Monolithic Waterproof Floor Hardener



Self Levelling Floor Screed



Flexible PU Floor Coating - For External Carpark



Flexible PU Floor Coating - For Internal Carpark



High Skid Resistance Epoxy Resin Flooring System - For Car Ramp



Anti-Slip Epoxy Floor Coating - For Internal Car Park



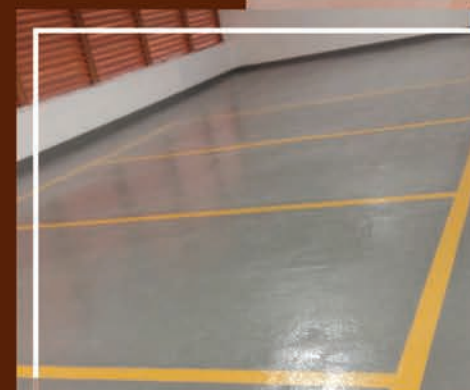
Heavy Duty Epoxy Floor Coating - For Warehouse



Lithium Silicate Liquid Hardener / Densifiers / Dustproofer - For Warehouse



Eco-Friendly Polyurea Floor Coating System



Line Marking



Arrow



Signwriting / Symbol

OTHER SERVICES

PROTECTIVE COATING

Government Department Projects



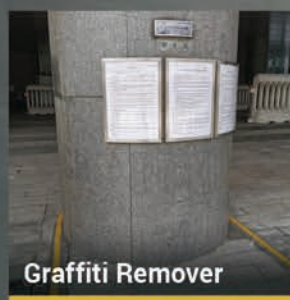
Anti-Graffiti Coating



Anti-Graffiti Coating



BEFORE ▲



Graffiti Remover

AFTER ▲

Hong Kong-Zhuhai-Macau Bridge Project



Anti-Carbonization - Silane Concrete Protective Coating



Anti-Carbonization - Silane Concrete Protective Coating

Highways Structure Projects



KESFORD's Protective Coating system is a multi-layered approach,

which includes surface preparation, primer coat, intermediate coat (dependent on specific requirements), and finish coat. Our systems are versatile and suitable for a range of spaces, specifically those where the wall substrate cannot be changed, providing the ultimate protection against harmful elements such as UV radiation, high humidity, chemical exposure, and graffiti.

Our Protective Coating options include:

- ◆ **1. Graffiti Remover** : A clean and effective solution for unsightly markings.
- ◆ **2. Anti-Graffiti Coating** : For easy removal of spray paint and stickers with just water.
- ◆ **3a. Professional Stone Cleaner** : A specially ready to use wash to kill and prevent the growth of mould and algae
- ◆ **3b. Protective Sealer** : Designed for various stonework, with a range of finishes to suit your needs, providing stain, dirt resistant and reduce organic growth
- ◆ **4. Anti-Carbonation Coating** : Ideal for delaying the aging process of wall surfaces.

Choose KESFORD for your Protective Coating needs and protect your surfaces with our high-quality and innovative solutions.

Stone Sealer Application Process



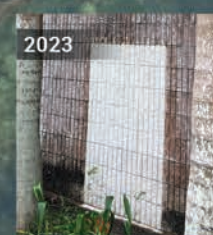
Step 1

Apply Hydron SS2 sterilising solution to kill and prevent the growth of mould and algae.



Step 2

Apply Nu-Cryl WRS hydrophobic impregnation coating system to provide stain and water repellency.



After 5 years

The condition of tile surface treated with Hydron Protective Sealer.

RE-ROOFING WORKS

KESFORD possesses the experience and expertise to provide exceptional service for all types of re-roofing works,

with options including conventional and eco-friendly alternatives. Our top-notch services begin with a detailed inspection of the project and proper preparation to ensure a seamless process for your building. From repair to installation and the final touches, our team closely monitors and follows up to guarantee safety, compliance with local building codes and seamless progress.

Introducing our Polyurea Re-roofing System, now available through our services! Our high-build, fast-set, spray-applied elastomer technology protects various metal/steel, wood, concrete, fiberglass, plastic, rubber, urethane foam and many other substrates.

Polyurea re-roofing system benefits:

- ◆ Low disruption to the facilities
- ◆ Non-toxic
- ◆ UV resistant
- ◆ Eco-friendly
- ◆ Fast application
- ◆ Cost saving
- ◆ Easy maintenance

Application of Polyurea



Completed Re-roofing



Surface Preparation

1 Cleaning Surface with Water Jet & Grinding Machine



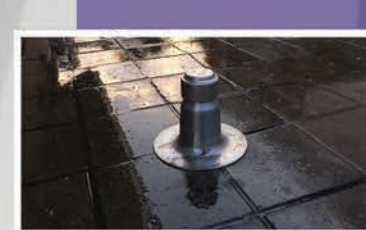
2 Forming Angle Fillet & Recess Groove Line



3 Application of Epoxy Primer



4 Installation of Air Vent



MACAU JOB REFERENCE

P.16

Sands Phase 2

WATERPROOFING

MOVEMENT JOINT



2006



2007

Ponte 16
Resort Macau
WATERPROOFING

MGM Macau

WATERPROOFING



2008



2009

One Central
WATERPROOFING
MOVEMENT JOINT



2011

Grand Lisboa Palace
WATERPROOFING



2012

Venetian Parcel
2, 5 & 6
WATERPROOFING
WALL COATING



2013

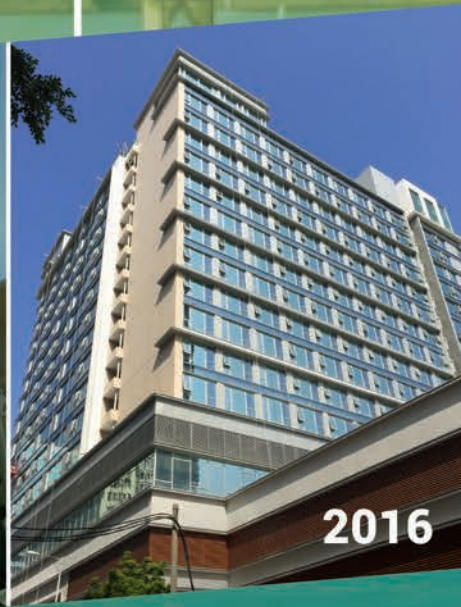
Tai Tam Shan
MOVEMENT JOINT

Galaxy Phase 2
WATERPROOFING
MOVEMENT JOINT



2015

Lot 19
FLOORING



2016

Macau Jockey Club
Residential Development
FLOORING
WATERPROOFING



2018

Wynn Macau Music Fountain -
Refurbishment
WATERPROOFING
FLOORING



2021

Galaxy Phase 3A, 3C & 3D
WATERPROOFING
MOVEMENT JOINT

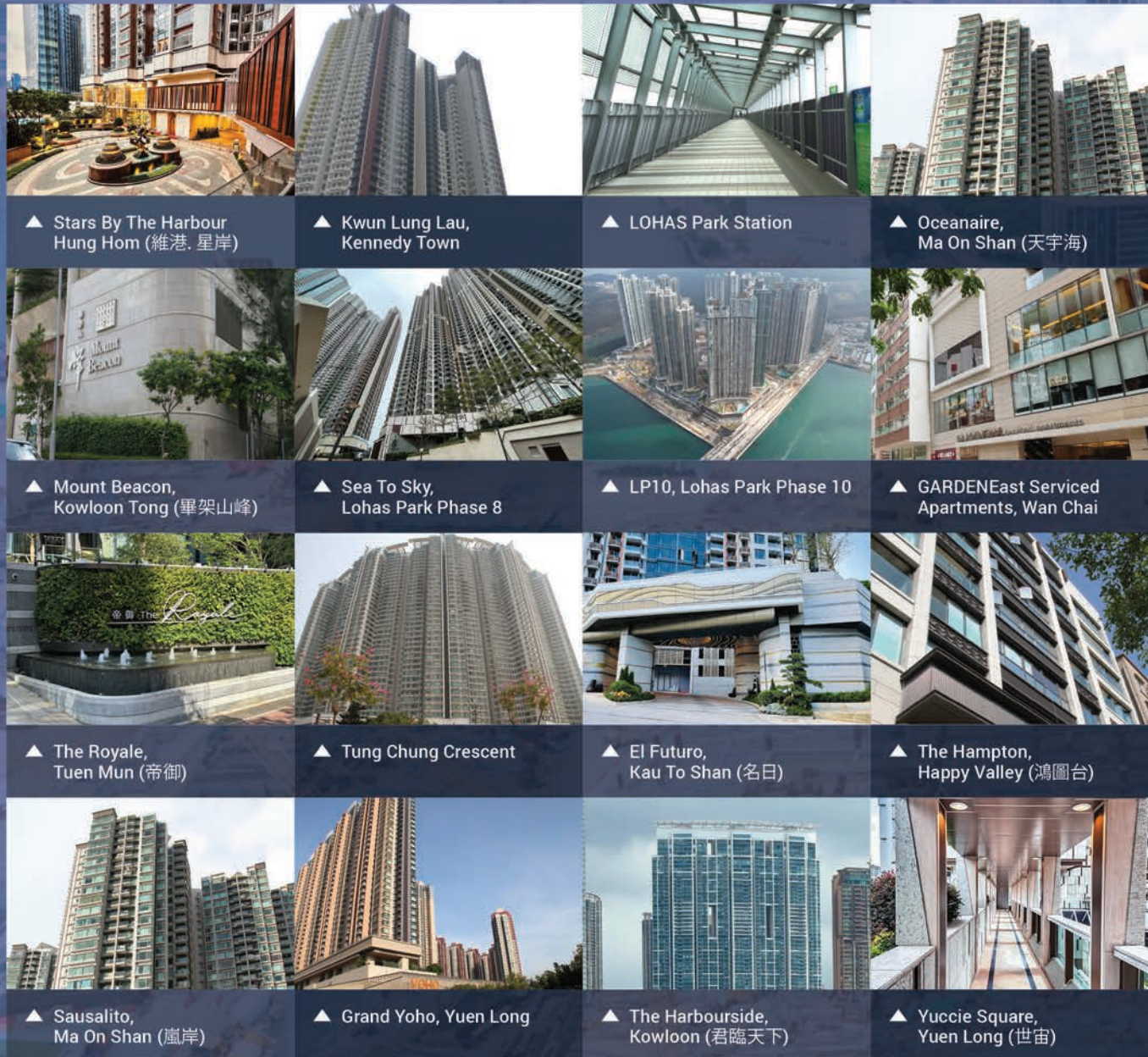


2022

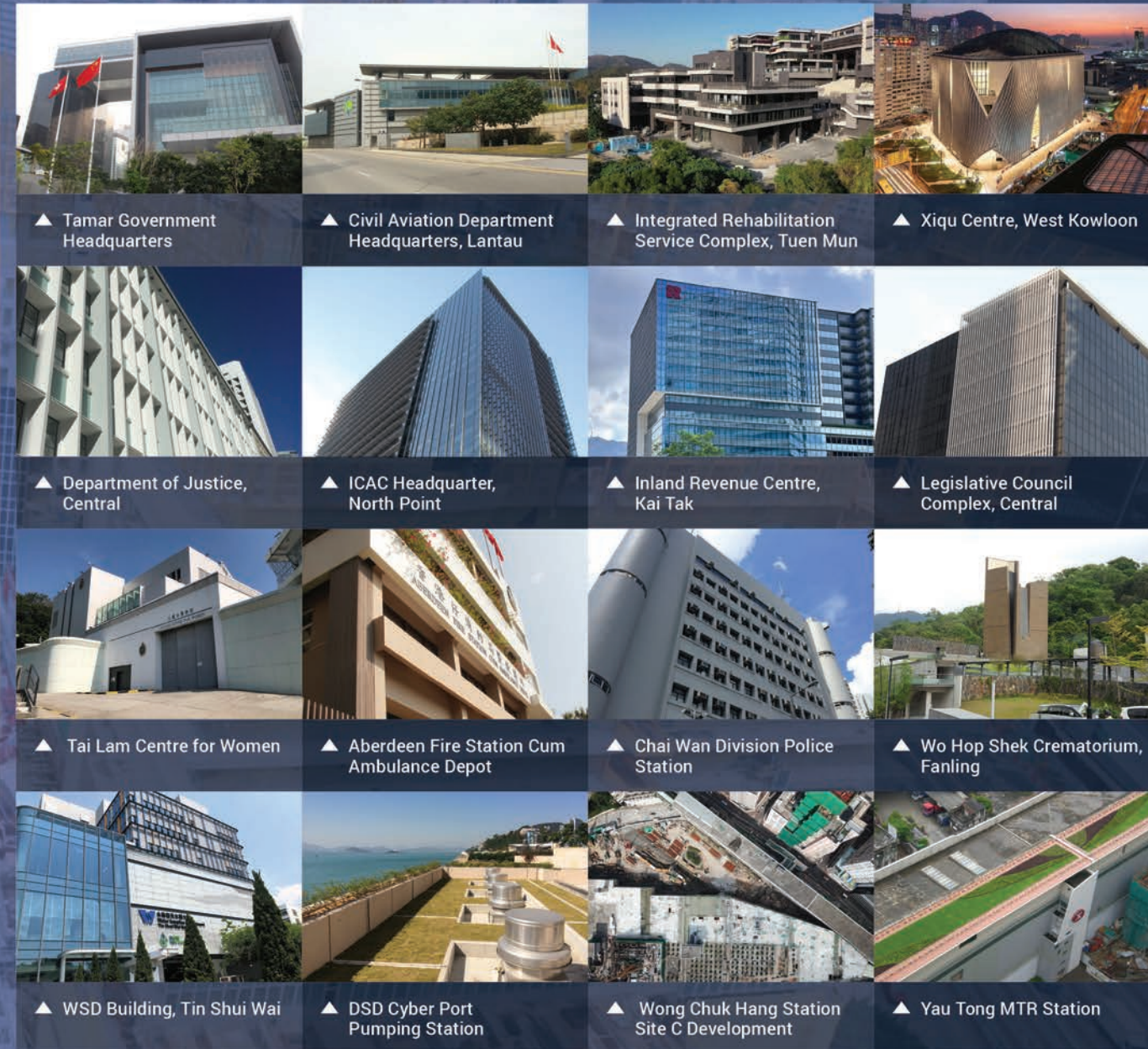
HONG KONG JOB REFERENCE

Over the years, KESFORD has worked with numerous contractors and construction companies to complete hundreds of projects in Hong Kong. The trust and satisfaction built with clients and partners over have led to long-lasting business relationships and have pushed us to continuously innovate and establish new standards in the industry.

Private Residences



Public & Government Buildings



Public Housing HKHA



Hospitals



HONG KONG

JOB REFERENCE

International Schools



▲ America International School, Kowloon Tong



▲ Australian International School, Kowloon Tong



▲ Harrow International School, Tuen Mun



▲ Malvern College Hong Kong, Pak Shek Kok



▲ Yew Chung International School of Hong Kong, Kowloon Tong



▲ The ISF Academy, Pokfulam

Schools & Colleges



▲ Hongchi Pinehill School, Tai Po



▲ United Christian College (Kowloon East)



▲ Buddhist Chan Wing Kan Memorial School, Yuen Long



▲ Po Leung Kuk Tin Ka Ping Millennium Primary School, Tai Po



▲ HKU SPACE, Causeway Bay



▲ THEi, Chai Wan

Universities



▲ CUHK, Sha Tin



▲ HKUST, Sai Kung



▲ PolyU, Hung Hom



▲ LingU, Tuen Mun



▲ HKMU, Ho Man Tin



▲ HSUHK, Sha Tin

Hotels & Commercial Buildings



▲ K11 ARTUS, Tsim Sha Tsui



▲ Harbour Grand Kowloon Hotel Extension, Hung Hom



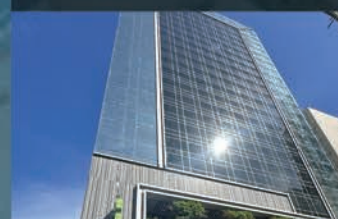
▲ Regala Skycity Hotel, Chek Lap Kok



▲ Courtyard Hong Kong Sha Tin



▲ Hyatt Regency Hong Kong, Sha Tin



▲ iClub To Kwa Wan Hotel



▲ ICC, West Kowloon



▲ Bank of China, Central



▲ AIA Central



▲ Nanyang Commercial Bank Building, Central



▲ HSBC Data Centre, TKO



▲ 42 Heung Yip Road, Wong Chuk Hang



▲ CITIC Tower, Admiralty



▲ 1881 Heritage, Tsim Sha Tsui



▲ Jockey Club - Club House, Happy Valley



▲ The HUB, Aberdeen



▲ Manulife Place, Kwun Tong



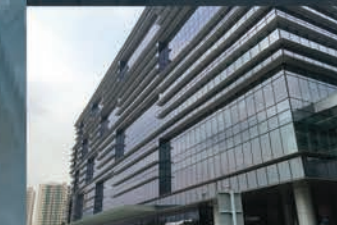
▲ The Henry, Sai Ying Pun



▲ Hong Kong Science Park



▲ D-Park, Tsuen Wan



▲ Shatin Communications & Technology Centre



▲ Nan Fung Place, Central



▲ King Palace Plaza, Tsuen Wan



▲ Toyo Mall, Tsim Sha Tsui

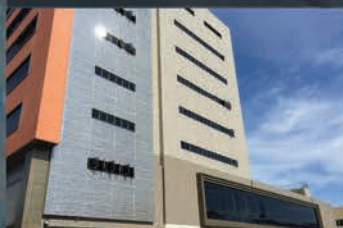
Logistics & Industrial



▲ Mapletree Logistic Hub, Tsing Yi



▲ Maxim's Cake & Bakery Factory, Tai Po



▲ Vita Green Headquarter, Tai Po



▲ Tins Centre, Tuen Mun



▲ Government Logistic Centre, Chai Wan



▲ Eu Yan Sang Centre, Yuen Long

Sports Park & Complex



▲ Sports Centre, TKO



▲ Hong Kong Velodrome, TKO



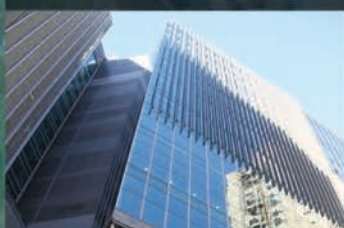
▲ Tsing Yi Southwest Sports Centre



▲ Tung Chung Swimming Pool



▲ Sun Yat Sen Memorial Park Sports Centre



▲ Youth Square, Chai Wan

Bridges



▲ Hong Kong-Zhuhai-Macau Bridge



▲ Tin Shui Wai Station



▲ PolyU, Hung Hom



▲ Po Lam Road, TKO



▲ Po Shun Road, TKO



▲ Sau Mau Ping Road, Kwun Tong

Temples & Churches



▲ Tsz Shan Monastery, Tai Po



▲ Wan Fau Sin Koon, Yuen Long



▲ Hong Kong Kun Chung Temple, Fanling



▲ Tam Kung Temple, Shau Kei Wan



▲ Ling Wan Temple, Yuen Long



▲ Shing Kwong Church, Causeway Bay



Please scan the QR code to access our detailed customer appreciation online

BUSINESS PARTNERS

CUSTOMERS' APPRECIATION



Gammon Construction Limited

- ◆ Residential Development of Mount Davis 33, Ka Wai Man Road, Sai Wan
- ◆ Tamar Development of The Government of the HKSAR

"Kesford has proved to be professional, dependable and well-organized for the contract requirements. I would be grateful for the works of Kesford to the success completion of the above projects and I would not hesitate to recommend Kesford in our future projects."

Unistress Building Construction Limited

- ◆ Proposed Residential Development at STTL 574, Lok Wo Sha, Ma On Shan, N.T.

"We are pleased to inform that Penetron Admixture were adopted to waterproof the swimming pool since 2016 and we are satisfied with the waterproofing performance. We would recommend to adopt the same product in our near future projects."



Hip Hing Construction Company Limited

- ◆ AIG Tower
- ◆ One Central Macau

"Kesford has been able to discharge their contractual obligations with high quality workmanship. We appreciate the contribution of Kesford to the success completion of the above projects and have no hesitation in recommending them to any engagement that requires quality and reliability."

Paul Y. Builders Limited

- ◆ Proposed Residential Development at Ka Wo Li Hill Road, Tuen Mun, TMTL 434

"The 'Penetron Admix' waterproofing concrete admixture was adopted to the screen wall, slab of basement structure, water tanks and roof slabs. Up to the date of this letter, the 'Penetron Admix' waterproofing concrete works had been completed almost 2 years without report of any significant leakage."

Our Clients:

In alphabetical order

Developers

- ◆ Architectural Services Department
- ◆ Cheung Kong Group
- ◆ Chinachem Group
- ◆ Drainage Services Department
- ◆ Henderson Land Group
- ◆ Hong Kong Housing Authority
- ◆ Hong Kong International Airport
- ◆ Hong Kong Jockey Club
- ◆ Hospital Authority
- ◆ MTR Corporation Limited
- ◆ Water Supplies Department

Consultants

- ◆ AECOM Asia Company Limited
- ◆ APP Building Consultancy Limited
- ◆ ARUP Group Limited
- ◆ ATKINS
- ◆ Meinhardt Consulting Engineers
- ◆ Rider Levett Bucknall Limited
- ◆ Wong & Cheng Consulting Engineers Limited
- ◆ Wong Pak Lam & Associates Consulting Engineers & Architects Limited

Main Contractors

- ◆ Able Contractors Limited
- ◆ Aggressive Construction Engineering Limited
- ◆ Build King Construction Limited
- ◆ China Overseas Building Construction Limited
- ◆ Gammon Construction Limited
- ◆ Hien Lee Engineering Company Limited
- ◆ Hip Hing Construction Company Limited
- ◆ Paul Y Construction Company Limited
- ◆ Penta-Ocean Construction Company Limited
- ◆ PRT Construction Company Limited
- ◆ Shui On Building Contractors Limited
- ◆ Unistress Building Construction Limited
- ◆ Well State Asia Limited

Architects

- ◆ Aedas
- ◆ Andrew LKF
- ◆ Associated Architects Limited
- ◆ CYS Associates (HK) Limited
- ◆ DLN Architects Limited
- ◆ Leigh & Orange Limited
- ◆ LWK & Partners (HK) Limited
- ◆ P&T Architects and Engineers Limited
- ◆ Ronald Lu & Partners (HK) Limited
- ◆ Simon Kwan & Associates Limited
- ◆ Wong & Ouyang (HK) Limited
- ◆ Wong Tung & Partners Limited

Authorization Letters



We are the distributor / agent of...



Kesford (Hong Kong) Limited

V2023.10

Flat 01, 21/F, Lucida Industrial Building, 43-47 Wang Lung Street, Tsuen Wan, N.T., Hong Kong

Telephone: +852 2396 8813

Fax: +852 2406 7038

E-mail: cs@kesford.com.hk

Website: www.kesford.com.hk